

Are Health Topics on Pictorial Cigarette Health Warning Labels Related to Perceived Effectiveness in China?

Jeffrey Hardesty, M.P.H.
Institute for Global Tobacco Control



JOHNS HOPKINS
BLOOMBERG SCHOOL
of PUBLIC HEALTH

Presenter Disclosures

Jeffrey Hardesty:

The following personal financial relationships with commercial interests relevant to this presentation existed during the past 12 months:

No relationships to disclose.

The work was supported with funding from Bloomberg Philanthropies' Bloomberg Initiative to Reduce Tobacco Use (www.bloomberg.org).



Co-Authors



Joanna Cohen, Ph.D.
Director of IGTC



Zuyi Zhu, M.D., M.P.H.
Physician



Ryan David Kennedy, Ph.D.
Assistant Professor

Thank you to all co-authors for their support throughout the study.



Outline

- I. Background
- I. Methods
- I. Results
- II. Conclusions



I. Background



JOHNS HOPKINS
BLOOMBERG SCHOOL
of PUBLIC HEALTH

Context

- In China, 300 million smokers and nearly 600 million non-smokers are affected by secondhand-smoke
- Ratified the WHO FCTC treaty in 2005
- Implementation of tobacco control policies in China has been slow



Tobacco Industry in China

- China National Tobacco Corporation (CNTC) is state-owned monopoly and their government administrative arm, the State Tobacco Monopoly Administration (STMA), develops and manages the tobacco market and implements anti-smoking efforts
- CNTC contributes 7-10% of the country's annual revenue

STMA



**Regulators of
tobacco & industry**

Purpose of Cigarette Pictorial Health Warning Labels

- Educate the public about the harms of smoking
- Increase quit-related thoughts among smokers
- Prevent non-smokers from initiating use



https://www.google.com/url?sa=i&ct=j&q=&esrc=s&source=images&cd=&cad=rja&uact=8&ved=0ahUKewioz_DW6vWABUC0YMKH8uX04MQRwBw&url=http%3A%2F%2Fwww.attcityhypnotherapy.com%2Fservices%2Fsmoking-cessation-hypnosis%2F&psig=ADVvaw3UHf2984n-erwIocC1J5T&ust=1508438625907260



<http://www-static.weddingbee.com/pics/278075/kids.jpg>

Compliance with FCTC Implementation Guidelines

China's HWLs



Translation: Smoking is harmful to your health;
please don't smoke in smoke-free places

Vietnam's HWLs



Translation: Smoking causes lung cancer



Effectiveness of the Current HWLs in China

Not effective at communicating the harms of smoking and encouraging smokers to quit



<http://globaltobaccocontrol.org/tpackss/>



Figure 5. Percentage of male smokers who believe that second-hand smoke causes lung cancer in non-smokers, by country(4)

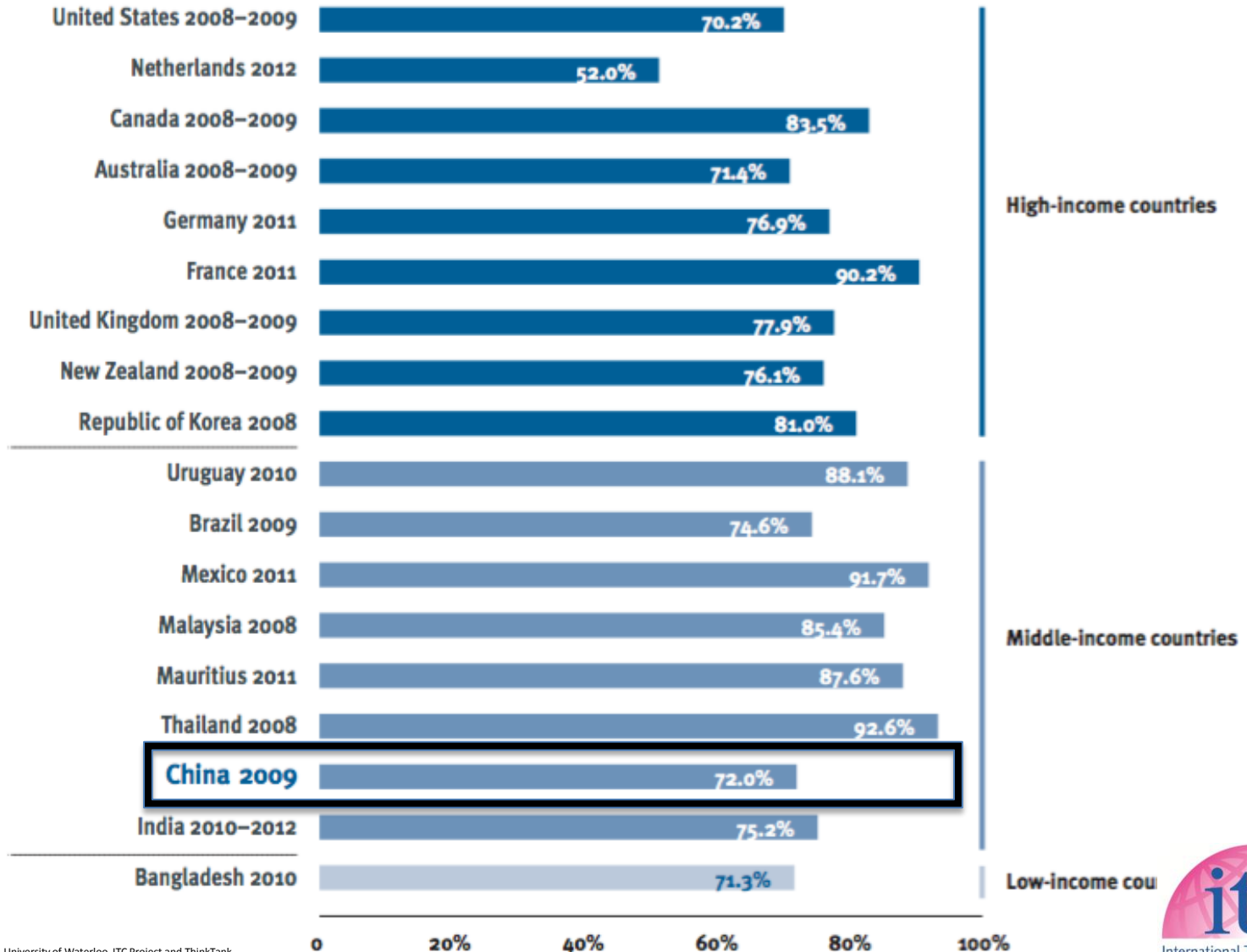
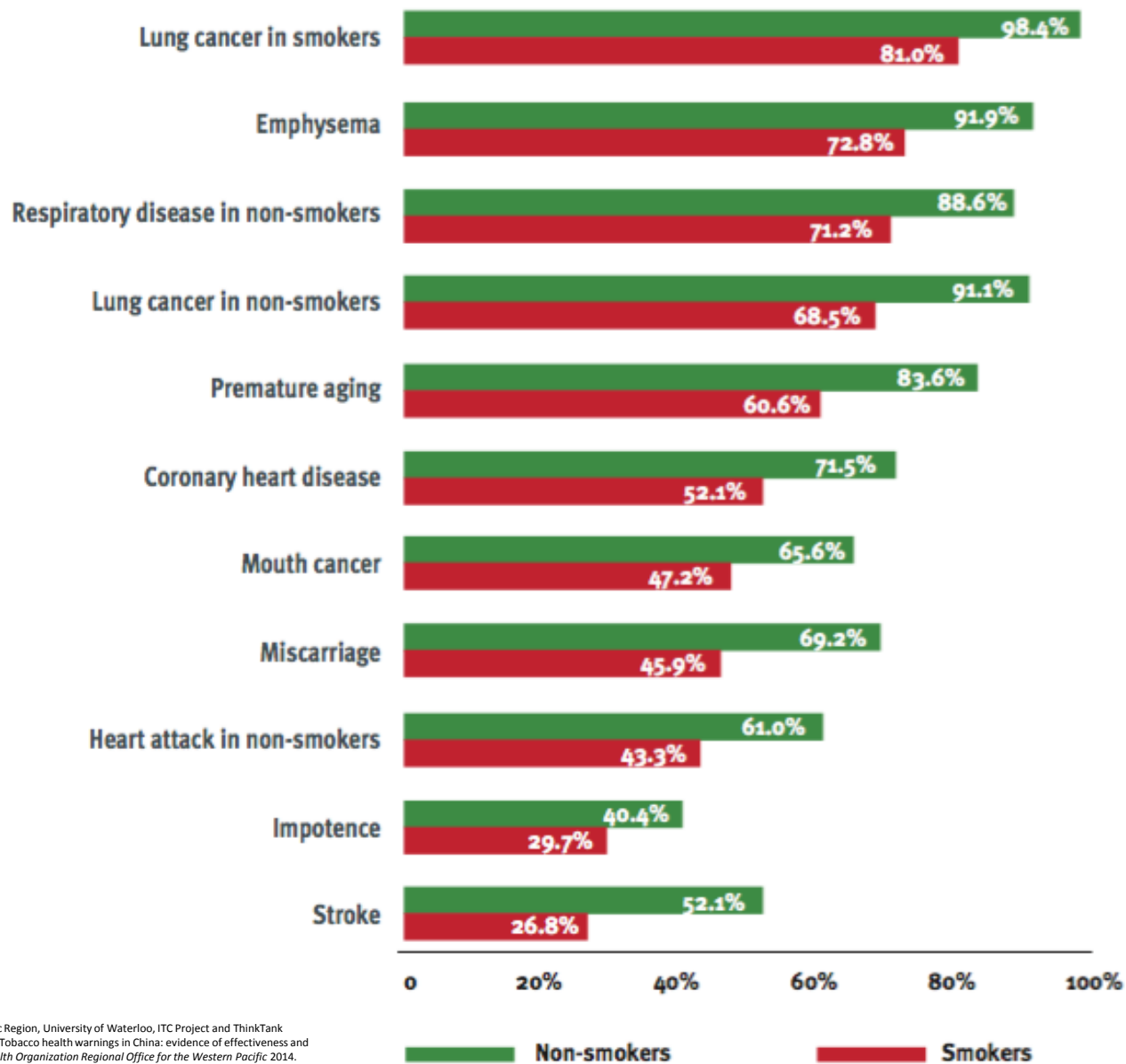


Figure 3. Percentage of smokers and non-smokers who believe that cigarette smoking causes specific health effects, Wave 3 (May–Oct. 2009)(4)



World Health Organization Western Pacific Region, University of Waterloo, ITC Project and ThinkTank Research Center for Health Development. Tobacco health warnings in China: evidence of effectiveness and implications for action. Manila: World Health Organization Regional Office for the Western Pacific 2014.

Objective

Test whether the health topics on pictorial cigarette health warning labels (HWLs) are related to perceived effectiveness ratings to identify effective health topics for Chinese adult smokers



Health Topics

- Lung cancer
 - lung cancer in smokers and non-smokers
- Other airway-related pathology
 - lung disease, asthma, and mouth cancer
- Non-airway-related pathology
 - heart attack, stroke, and blindness



II. Methods



JOHNS HOPKINS
BLOOMBERG SCHOOL
of PUBLIC HEALTH

Study Design, Cities, and Sample

- A cross-sectional randomized experimental survey
- Beijing, Shanghai, Wuhan, and Kunming
- 1615 adult Chinese smokers in 2016
 - Oversampled men (95%)
 - Half above 40 years old



www.maps.google.com



Protocols

1. Randomized participants to one of four groups of HWLs:
 - Self-harm messages + factual text (8 HWLs)
 - Lung cancer, mouth cancer, stroke, and blindness
 - Self-harm messages + personal text (8 HWLs)
 - Lung cancer, mouth cancer, stroke, and blindness
 - Smokers-harming-others messages + factual text (8 HWLs)
 - Lung cancer, lung disease, asthma, and heart attack
 - Smokers-harming-others messages + personal text (8 HWLs)
 - Lung cancer, lung disease, asthma, and heart attack

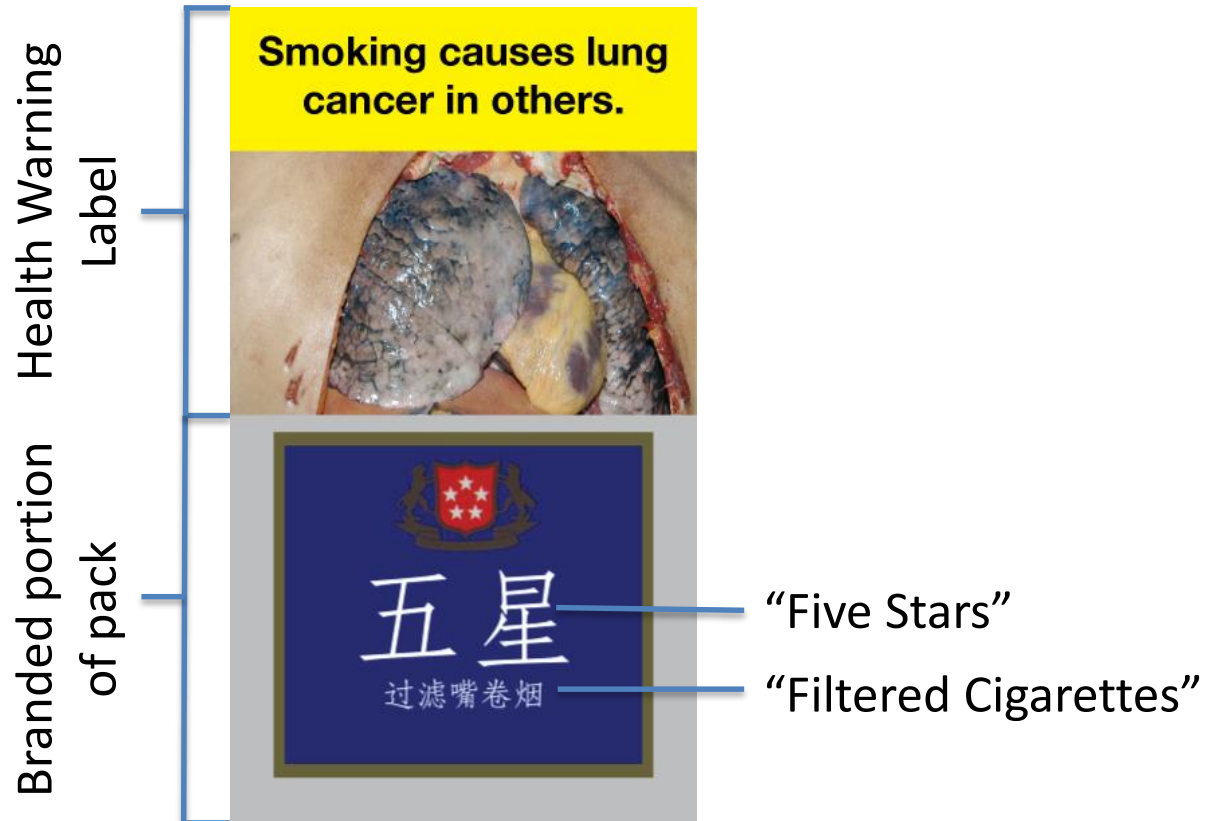


Protocols (Cont.)

2. All 32 HWLs were individually rated using a 10-point scale, with 10 being most effective
3. HWLs were sorted based on effectiveness ratings to assess potential clustering of health topics among the relative ratings



Mock Cigarette Pack



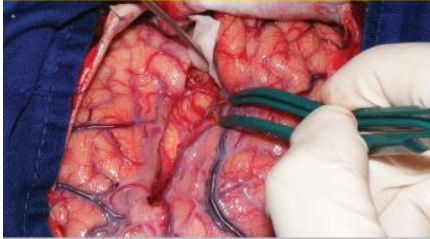
Courtesy of Dr. Prakit, Action on Smoking and Health Foundation, Thailand



Independent Groups

Self-harm messages +
factual text

**Smoking causes
stroke.**



iStock.com/wenht

Self-harm messages +
personal text

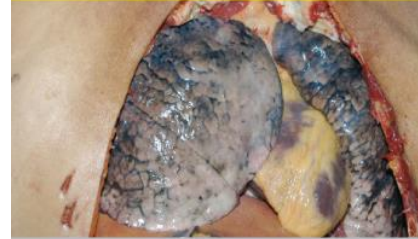
**Smoking caused
my mouth cancer.**



By Bionerd (Own work) [CC BY 3.0
(<http://creativecommons.org/licenses/by/3.0/>), via
Wikimedia Commons

Smokers-harming-others
messages + factual text

**Smoking causes lung
cancer in others.**



Courtesy of Dr. Prakrit, Action on Smoking
and Health Foundation Thailand

Smokers-harming-others
messages + personal text

**My smoking caused
my child's asthma.**



Licensed under Health Canada copyright

Self-harm health effects
lung cancer; mouth cancer;
stroke; and blindness

Secondhand smoke health effects
lung cancer; lung disease;
asthma; and heart attack

III. Results



JOHNS HOPKINS
BLOOMBERG SCHOOL
of PUBLIC HEALTH

Effectiveness ratings for each HWL among adult Chinese smokers (n=1,615)
Listed in descending order.

	Message	Text	Image	Disease	Rating
1	Harming-others	Personal	Clinical	Lung cancer (lungs)	7.73
2	Harming-others	Factual	Clinical	Lung cancer (lungs)	7.63
3	Self-harm	Personal	Individual Suffering	Lung cancer (man)	7.32
4	Self-harm	Factual	Clinical	Lung cancer (x-ray)	7.23
5	Self-harm	Personal	Clinical	Lung cancer (x-ray)	7.22
6	Harming-others	Personal	Individual Suffering	Lung disease	7.18
7	Harming-others	Personal	Individual Suffering	Lung cancer (woman)	7.15
8	Harming-others	Factual	Individual Suffering	Lung cancer (woman)	7.11
9	Self-harm	Factual	Individual Suffering	Lung cancer (man)	7.07
10	Harming-others	Personal	Individual Suffering	Asthma	6.99
11	Harming-others	Factual	Individual Suffering	Lung disease	6.94
12	Self-harm	Personal	Clinical	Mouth cancer	6.85
13	Self-harm	Factual	Clinical	Mouth cancer	6.83
14	Harming-others	Personal	Clinical	Asthma	6.82
15	Harming-others	Personal	Clinical	Lung disease	6.78
16	Harming-others	Personal	Clinical	Heart attack	6.75
17	Harming-others	Factual	Individual Suffering	Asthma	6.72
18	Self-harm	Personal	Individual Suffering	Mouth cancer	6.71
19	Harming-others	Factual	Clinical	Lung disease	6.67
20	Self-harm	Personal	Clinical	Stroke	6.66
21	Harming-others	Factual	Clinical	Asthma	6.61
22	Harming-others	Factual	Clinical	Heart attack	6.58
23	Harming-others	Personal	Individual Suffering	Heart attack	6.56
24	Harming-others	Factual	Individual Suffering	Heart attack	6.47
25	Self-harm	Factual	Individual Suffering	Mouth cancer	6.46
26	Self-harm	Factual	Clinical	Stroke	6.42
27	Self-harm	Personal	Individual Suffering	Stroke	6.05
28	Self-harm	Factual	Individual Suffering	Stroke	6.00
29	Self-harm	Personal	Clinical	Blindness	5.89
30	Self-harm	Factual	Clinical	Blindness	5.83
31	Self-harm	Personal	Individual Suffering	Blindness	5.51
32	Self-harm	Factual	Individual Suffering	Blindness	5.50

Ratings were based on a scale of 1 to 10 with 10 being the most effective
Effectiveness: Thinking about quitting



Effectiveness ratings for each HWL among adult Chinese smokers (n=1,615)
Listed in descending order.

	Message	Text	Image	Disease	Rating
1	Harming-others	Personal	Clinical	Lung cancer (lungs)	7.73
2	Harming-others	Factual	Clinical	Lung cancer (lungs)	7.63
3	Self-harm	Personal	Individual Suffering	Lung cancer (man)	7.32
4	Self-harm	Factual	Clinical	Lung cancer (x-ray)	7.23
5	Self-harm	Personal	Clinical	Lung cancer (x-ray)	7.22
6	Harming-others	Personal	Individual Suffering	Lung disease	7.18
7	Harming-others	Personal	Individual Suffering	Lung cancer (woman)	7.15
8	Harming-others	Factual	Individual Suffering	Lung cancer (woman)	7.11
9	Self-harm	Factual	Individual Suffering	Lung cancer (man)	7.07
10	Harming-others	Personal	Individual Suffering	Asthma	6.99
11	Harming-others	Factual	Individual Suffering	Lung disease	6.94
12	Self-harm	Personal	Clinical	Mouth cancer	6.85
13	Self-harm	Factual	Clinical	Mouth cancer	6.83
14	Harming-others	Personal	Clinical	Asthma	6.82
15	Harming-others	Personal	Clinical	Lung disease	6.78
16	Harming-others	Personal	Clinical	Heart attack	6.75
17	Harming-others	Factual	Individual Suffering	Asthma	6.72
18	Self-harm	Personal	Individual Suffering	Mouth cancer	6.71
19	Harming-others	Factual	Clinical	Lung disease	6.67
20	Self-harm	Personal	Clinical	Stroke	6.66
21	Harming-others	Factual	Clinical	Asthma	6.61
22	Harming-others	Factual	Clinical	Heart attack	6.58
23	Harming-others	Personal	Individual Suffering	Heart attack	6.56
24	Harming-others	Factual	Individual Suffering	Heart attack	6.47
25	Self-harm	Factual	Individual Suffering	Mouth cancer	6.46
26	Self-harm	Factual	Clinical	Stroke	6.42
27	Self-harm	Personal	Individual Suffering	Stroke	6.05
28	Self-harm	Factual	Individual Suffering	Stroke	6.00
29	Self-harm	Personal	Clinical	Blindness	5.89
30	Self-harm	Factual	Clinical	Blindness	5.83
31	Self-harm	Personal	Individual Suffering	Blindness	5.51
32	Self-harm	Factual	Individual Suffering	Blindness	5.50

80% of the top 10
HWLs depicted
lung cancer

Ratings were based on a scale of 1 to 10 with 10 being the most effective
Effectiveness: Thinking about quitting



Effectiveness ratings for each HWL among adult Chinese smokers (n=1,615)
Listed in descending order.

	Message	Text	Image	Disease	Rating
1	Harming-others	Personal	Clinical	Lung cancer (lungs)	7.73
2	Harming-others	Factual	Clinical	Lung cancer (lungs)	7.63
3	Self-harm	Personal	Individual Suffering	Lung cancer (man)	7.32
4	Self-harm	Factual	Clinical	Lung cancer (x-ray)	7.23
5	Self-harm	Personal	Clinical	Lung cancer (x-ray)	7.22
6	Harming-others	Personal	Individual Suffering	Lung disease	7.18
7	Harming-others	Personal	Individual Suffering	Lung cancer (woman)	7.15
8	Harming-others	Factual	Individual Suffering	Lung cancer (woman)	7.11
9	Self-harm	Factual	Individual Suffering	Lung cancer (man)	7.07
10	Harming-others	Personal	Individual Suffering	Asthma	6.99
11	Harming-others	Factual	Individual Suffering	Lung disease	6.94
12	Self-harm	Personal	Clinical	Mouth cancer	6.85
13	Self-harm	Factual	Clinical	Mouth cancer	6.83
14	Harming-others	Personal	Clinical	Asthma	6.82
15	Harming-others	Personal	Clinical	Lung disease	6.78
16	Harming-others	Personal	Clinical	Heart attack	6.75
17	Harming-others	Factual	Individual Suffering	Asthma	6.72
18	Self-harm	Personal	Individual Suffering	Mouth cancer	6.71
19	Harming-others	Factual	Clinical	Lung disease	6.67
20	Self-harm	Personal	Clinical	Stroke	6.66
21	Harming-others	Factual	Clinical	Asthma	6.61
22	Harming-others	Factual	Clinical	Heart attack	6.58
23	Harming-others	Personal	Individual Suffering	Heart attack	6.56
24	Harming-others	Factual	Individual Suffering	Heart attack	6.47
25	Self-harm	Factual	Individual Suffering	Mouth cancer	6.46
26	Self-harm	Factual	Clinical	Stroke	6.42
27	Self-harm	Personal	Individual Suffering	Stroke	6.05
28	Self-harm	Factual	Individual Suffering	Stroke	6.00
29	Self-harm	Personal	Clinical	Blindness	5.89
30	Self-harm	Factual	Clinical	Blindness	5.83
31	Self-harm	Personal	Individual Suffering	Blindness	5.51
32	Self-harm	Factual	Individual Suffering	Blindness	5.50

80% of the labels ranked 11-20 depicted other pathology of the airway (lung disease, mouth cancer, or asthma)

Ratings were based on a scale of 1 to 10 with 10 being the most effective
Effectiveness: Thinking about quitting



Effectiveness ratings for each HWL among adult Chinese smokers (n=1,615)
Listed in descending order.

	Message	Text	Image	Disease	Rating
1	Harming-others	Personal	Clinical	Lung cancer (lungs)	7.73
2	Harming-others	Factual	Clinical	Lung cancer (lungs)	7.63
3	Self-harm	Personal	Individual Suffering	Lung cancer (man)	7.32
4	Self-harm	Factual	Clinical	Lung cancer (x-ray)	7.23
5	Self-harm	Personal	Clinical	Lung cancer (x-ray)	7.22
6	Harming-others	Personal	Individual Suffering	Lung disease	7.18
7	Harming-others	Personal	Individual Suffering	Lung cancer (woman)	7.15
8	Harming-others	Factual	Individual Suffering	Lung cancer (woman)	7.11
9	Self-harm	Factual	Individual Suffering	Lung cancer (man)	7.07
10	Harming-others	Personal	Individual Suffering	Asthma	6.99
11	Harming-others	Factual	Individual Suffering	Lung disease	6.94
12	Self-harm	Personal	Clinical	Mouth cancer	6.85
13	Self-harm	Factual	Clinical	Mouth cancer	6.83
14	Harming-others	Personal	Clinical	Asthma	6.82
15	Harming-others	Personal	Clinical	Lung disease	6.78
16	Harming-others	Personal	Clinical	Heart attack	6.75
17	Harming-others	Factual	Individual Suffering	Asthma	6.72
18	Self-harm	Personal	Individual Suffering	Mouth cancer	6.71
19	Harming-others	Factual	Clinical	Lung disease	6.67
20	Self-harm	Personal	Clinical	Stroke	6.66
21	Harming-others	Factual	Clinical	Asthma	6.61
22	Harming-others	Factual	Clinical	Heart attack	6.58
23	Harming-others	Personal	Individual Suffering	Heart attack	6.56
24	Harming-others	Factual	Individual Suffering	Heart attack	6.47
25	Self-harm	Factual	Individual Suffering	Mouth cancer	6.46
26	Self-harm	Factual	Clinical	Stroke	6.42
27	Self-harm	Personal	Individual Suffering	Stroke	6.05
28	Self-harm	Factual	Individual Suffering	Stroke	6.00
29	Self-harm	Personal	Clinical	Blindness	5.89
30	Self-harm	Factual	Clinical	Blindness	5.83
31	Self-harm	Personal	Individual Suffering	Blindness	5.51
32	Self-harm	Factual	Individual Suffering	Blindness	5.50

83% of the labels ranked 21-32 depicted non-airway health effects (heart attack, stroke, or blindness)

Ratings were based on a scale of 1 to 10 with 10 being the most effective
Effectiveness: Thinking about quitting



Top Performing HWLs

1

My smoking caused her lung cancer.



五星
过滤嘴卷烟

2

Smoking causes lung cancer in others.



五星
过滤嘴卷烟

3

Smoking caused my lung cancer.



五星
过滤嘴卷烟

4

Smoking causes lung cancer.



五星
过滤嘴卷烟

5

Smoking caused my lung cancer.



五星
过滤嘴卷烟

6

My smoking caused her lung disease.



五星
过滤嘴卷烟

7

My smoking caused her lung cancer.



五星
过滤嘴卷烟

8

Smoking causes lung cancer in others.



五星
过滤嘴卷烟

9

Smoking causes lung cancer.



五星
过滤嘴卷烟

10

My smoking caused my child's asthma.



五星
过滤嘴卷烟



IV. Conclusions



JOHNS HOPKINS
BLOOMBERG SCHOOL
of PUBLIC HEALTH

Discussion

- Adult Chinese smokers rated lung cancer the most effective HWL health topic followed by other airway pathologies and non-airway pathologies, respectively.
- These findings suggest preconceived knowledge might affect initial perceived effectiveness of HWLs.
- Strategic implementation of HWL policy could improve perceived effectiveness of non-lung cancer-related HWLs in China.



Acknowledgements

China CDC

WHO China Office

Vital Strategies

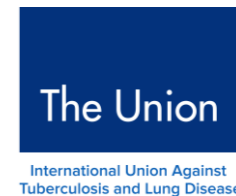
Union Against Tuberculosis and Lung Disease

Campaign for Tobacco Free Kids

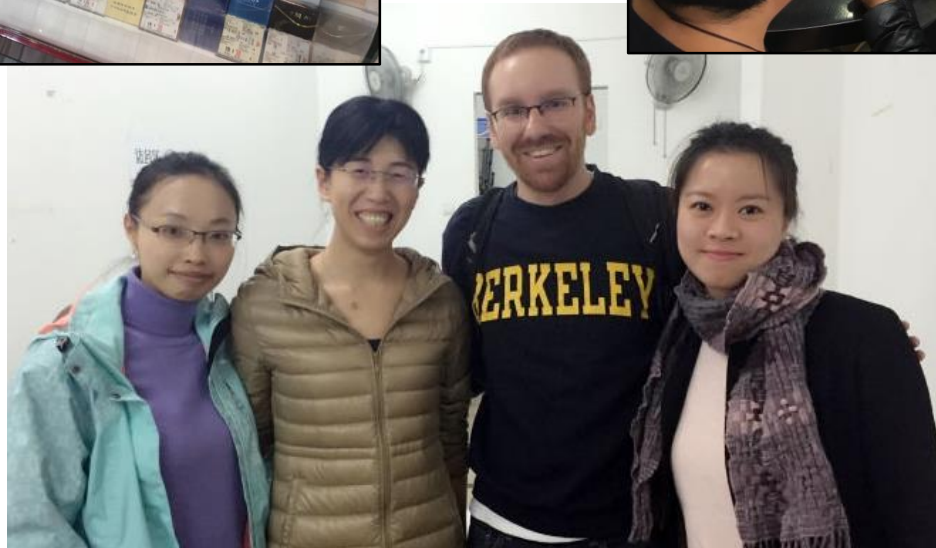
IGTC Communications Team

RisingSun

Behavioural Architects



Q&A



References

1. Gonghuan Y. Global Adult Tobacco Survey (GATS) China 2010 Country Report. *China Center for Disease Control and Prevention, China CDC* 2010.
2. WHO | Parties to the WHO Framework Convention on Tobacco Control. Available at: http://www.who.int/fctc/signatories_parties/en/. Accessed 7/20/2017, 2017.
3. He P, Takeuchi T, Yano E. An overview of the China National Tobacco Corporation and State Tobacco Monopoly Administration. *Environmental Health & Preventive Medicine* 2013;18:85.
4. Tobacco Companies | The Tobacco Atlas. Available at: <http://www.tobaccoatlas.org/topic/tobacco-companies/>. Accessed 10/13/2017, 2017.
5. Institute for Global Tobacco Control. State of Evidence Review: Health Warning Labels on Tobacco Products 2013.
6. People's Republic of China. Rules on Cigarette Package Labeling in the Jurisdiction of the People's Republic of China 2015.
7. Yang Y, Wang JJ, Wang CX, et al. Awareness of tobacco-related health hazards among adults in China. *Biomedical And Environmental Sciences: BES* 2010;23:437 doi:10.1016/S0895-3988(11)60004-4.
8. Fong GT, Hammond D, Jiang Y, et al. Perceptions of tobacco health warnings in China compared with picture and text-only health warnings from other countries: an experimental study. *Tob Control* 2010;19:i69 doi:10.1136/tc.2010.036483.
9. World Health Organization Western Pacific Region, University of Waterloo, ITC Project and ThinkTank Research Center for Health Development. Tobacco health warnings in China: evidence of effectiveness and implications for action. *Manila: World Health Organization Regional Office for the Western Pacific* 2014.



Supplemental Slides

- Strengths:
 - Standardized HWL groups
 - Combinations of features
 - No brand bias
- Limitations:
 - More difficult to find high quality clinical and individual suffering images for other airway and non-airway health effects



Supplemental Slides

- Next Steps:
 - Using our data to design and evaluate more culturally-relevant and policy-ready HWLs
 - Consult with in-country and Bloomberg partners on strategic implementation of HWLs

