

THE ROGER C. LIPITZ CENTER FOR INTEGRATED HEALTH CARE

JULY 1, 2020 - JUNE 30, 2021



A YEAR IN REVIEW

Faculty, staff, and trainees at the Roger C. Lipitz Center for Integrated Health Care are making important contributions to research, policy, and practice in the area of integrated care. Through the challenges of the past year, including the ongoing COVID-19 pandemic and continued concerns regarding equity and social justice, our Center continues to persevere and thrive. We are proud to welcome new staff, students, and trainees and now more than ever remain committed to advancing our mission of conducting innovative research, educating the leaders of tomorrow, and translating discoveries into effective policies and practices to improve the quality of care and quality of life of persons with complex health needs and disabilities.

WHAT'S INSIDE:

Letter from the Director

About the Center

History

Leadership

Our People

Research Areas and Support

Peer-reviewed Research

Educational Activities and
Teaching

LETTER FROM THE DIRECTOR

I am struck by the progress that has been made over the course of the last year despite the shift to an entirely remote work environment. The importance of our mission has been heightened in the context of recent events and vulnerabilities uncovered by the COVID-19 outbreak. Our accomplishments in the face of so many challenges are a testament to the commitment, talent, resilience, and passion of Center faculty, staff, and trainees, which I am pleased to reflect on in this Report.

SUSTAINED RESEARCH PRODUCTIVITY

The Center sustained a tremendous level of research productivity over the course of the last year. Center faculty, staff, and trainees and have led or coauthored more than 115 peer-review publications in high-impact journals, including *JAMA*, the *New England Journal of Medicine*, *JAMA Internal Medicine*, *JAMA*

Network Open, the *Journal of the American Geriatrics Society*, *Health Affairs*, and *Health Services Research*. Findings from this work are driving national policy discussions on wide-ranging policy topics including drug pricing, Medicare coverage decisions, dementia care and services, and long-term services and supports. Our work has been featured in mainstream media outlets such as the *New York Times*, the *Washington Post*, the *Wall Street Journal*, and *Reuters*, at scientific and policy meetings, and disseminated to a network of more than 3,000 policy makers, researchers, and experts through our quarterly newsletter and social media.

A new award by the National Institute on Aging has enabled us to bolster our commitment to training. The Roger C. Lipitz Center for Integrated Health Care is the hub of a new Tri-School T32 training program in Health Services Outcomes Research for Aging Populations. The program seeks to produce the next generation of scientists with rigorous training in person- and family-centered health services and outcomes research focused on older adults. I am honored to co-direct the program with Cynthia Boyd, the newly named Director of the Division of Geriatric Medicine and Gerontology, in close partnership the newly appointed Dean Sarah Szanton of the School of Nursing. The program supports 8 pre- and post- doctoral trainees each year across the Schools of Nursing, Public Health and Medicine. Our first cohorts are outstanding and include representation across diverse fields of audiology, geriatric medicine, nursing, occupational therapy, as well as social science-oriented areas of services research, economics, and survey methods, consistent with our programmatic mission.



OUR TRAINEES ARE THRIVING

Mani Keita defended her dissertation this June and continues to advance efforts to promote equity and address structural racism as a Presidential Fellow in the University's Office of the Provost. Kelly Anderson successfully defended her dissertation and is starting a faculty position at the University of Colorado. Julia Burgdorf led externally funded studies by the Alliance for Home Health Quality, the Visiting Nurse Association of New York, and the National Institute on Aging to pursue studies to understand and improve the quality of home health care. Our doctoral and post-doctoral trainees collectively first-authored 16 peer-reviewed papers in high-impact journals. Safiyyah Okoye and Julia Burgdorf delivered oral presentations of their research findings at the annual virtual meeting of the Gerontological Society of America. Linda Chyr, Kelly Anderson, and Julia Burgdorf were selected for podium presentations of research findings at the 2021 annual virtual meeting of AcademyHealth.

WE ARE CONTRIBUTING NEW KNOWLEDGE

The COVID-19 pandemic has amplified the importance of our work to understand and improve care and quality of life for those who are most vulnerable. Led by Judy Kasper and Vicki Freedman of the University of Michigan, the National Institute on Aging-supported National Health and Aging Trends Study released its tenth annual wave of data collection for a nationally representative sample of older Medicare beneficiaries, as well as data collected during the COVID-19 pandemic to assess the impact of COVID-19 on older people and those who helped them. A milestone 10th anniversary 2-day virtual conference in May attested to the impact and contributions of NHATS to the field afforded by this effort, as well as emerging research findings regarding disability trajectories that are being made possible due to the availability of multiple waves of longitudinal data.

WE ARE IDENTIFYING AVENUES FOR POLICY AND CLINICAL INTERVENTION

Through novel analyses Center members are identifying new approaches to improve care quality and outcomes. Work by Lauren Nicholas published in JAMA Internal Medicine found that Medicare beneficiaries with dementia missed payments on credit accounts as early as 6 years prior to diagnosis, suggesting opportunities for early detection and intervention. With the support of a CDC-funded pilot study from the Johns Hopkins Center for Injury Research and Policy, Lisa Reider and collaborator Joe Levy's work in the Journal of the American Geriatrics Society found encouraging trends in the reduction of fracture hospitalizations among older adults, but important variability across subgroups pointing to areas for further investigation and intervention. With support of the Hopkins Economics of Alzheimer's Disease and Services Center and a pilot award to Dr. Chanee Fabius from the Hopkins Center for Health Disparities Solutions, Center faculty and trainees are initiating new work that draws on NHATS and NSOC to examine the effect of social and environmental factors related to where people live on the health and well-being of older adults and their family caregivers.

WE ARE INNOVATING

By conducting embedded interventional studies within care delivery settings, our work contributes new knowledge on models of care that are poised for widespread diffusion. Two trials funded by the National Institute on Aging led by Jennifer Wolff and Sydney Dy test whether and how simple, scalable strategies to stimulate advance care planning in primary care among older adults and their family care partners affects end-of-life care. With the support of a pilot awards from the Hopkins Resource Center for Minority Aging Research and a prestigious career development award by the IMPACT Collaboratory, Chanee Fabius is launching a new line of work to understand and address the needs of direct care workers to older adults with dementia. Lisa Reider, Associate-Director of the Coordinating Center of the Major Extremity Trauma and Rehabilitation Consortium (METRC) and colleagues are pioneering strategies to improve orthopaedic trauma care and outcomes through a Department of Defense-funded network of clinical centers that conducts multi-center clinical research studies.

WE ARE FOCUSED ON POLICY

We continue to view our efforts to support policy development as among our most highly impactful contributions. With the support of Arnold Ventures, Jerry Anderson, Aditi Sen, Jeromie Ballreich, and Mariana Social are identifying strategies to bring about more affordable pharmaceutical prices, providing extensive testimony to state and federal leaders, and communicating new knowledge to the public. Amber Willink and Karen Davis are conducting

analyses of Medicare policy with a Commonwealth Fund-supported project to examine Medicare Benefit Design and Long-term Services and Supports. Dan Polsky, Judy Kasper, and Jennifer Wolff contributed to National Sciences, Engineering, and Medicine activities related to equitable allocation of COVID-19 vaccines (Polsky), and dementia care and services (Kasper and Wolff).



WE ARE CREATING CHANGE THROUGH TRANSFORMATIVE PARTNERSHIPS AND CREATING COMMUNITY

With support from the National Institute on Aging we have launched the Hopkins Economics of Alzheimer's Disease and Services (HEADS) Center to stimulate research that improves the care and lives of those affected by Alzheimer's disease and related dementias. Led by Dan Polsky and Jennifer Wolff, HEADS is building interdisciplinary collaborations and increasing population-based knowledge of dementia care and its impacts and advance solutions that address accessibility, affordability, quality, and equity of care. This Center amplifies the Lipitz Center's research and policy focus on complex care needs and disability by drawing new faculty and students from Public Health and Medicine to these important issues and establishing new linkages to other centers in the University community. Highlights of the last year have included awarding 9 pilot projects, convening a summer workshop for early-stage investigators, and co-sponsoring with the Hopkins Business of Health Initiative a symposium of experts from academia, clinical medicine, and policy on the controversial topic of the FDA approval of Aducanumab, convened by Dan Polsky.

It is bittersweet to say goodbye to those who have been instrumental to our Center over many years. Lauren Nicholas assumed a faculty position at the University of Colorado, Aditi Sen has taken a position as Director of Research and Policy at the Health Care Cost Institute (HCCI), an independent, non-profit research institute, and Julia Burgdorf leaves to assume a research position at the Center for Home Care Policy at the Visiting Nurse Association of New York. We wish them well but look forward to continued collaborations as they remain active members of our community. Kelly Anderson is starting a new faculty position at the University of Colorado Skaggs School of Pharmacy and Pharmaceutical Sciences. Research assistants Ambrym Smith and Amrutha Kadali have had shorter tenures within our Center, and embark on new career paths and educational opportunities in social work and health care administration, respectively.

HONORING JUDY KASPER

Finally, I want to express my profound sadness by the recent loss of our longtime close colleague, friend, and a legend in our field, Judith Dellinger Kasper on August 4th. Judy was an expert on disability, long-term care policy, and survey research methods, and for more than a decade has led the National Health and Aging Trends Study. She was also a beloved teacher and mentor and played a foundational role in wide-ranging arenas of academic life in our Center, Department, and School. Judy was a core faculty member of our Center from its inception in 2001. She was my dissertation advisor, long-time mentor, and a dear friend. I have heard from colleagues at Hopkins and from around the world who have reached out to share their grief and their personal reflections and appreciation for Judy. These remarks overwhelmingly expressed admiration for Judy's generosity, honesty, humor, wisdom, and her tremendous impact on the field. Judy was an amazing human being, a first-rate thinker, and a top-notch scientist. We are fortunate to have learned from her wisdom and stabilizing force for so many years: I will miss her terribly.

Jennifer L. Wolff, PhD, MHS

Eugene and Mildred Lipitz Professor of Health Policy and Management



In Memory of
**JUDITH ANN
DELLINGER KASPER**

Read about her impact in
the [*Baltimore Sun*](#).

"Though her pace was quick, Judy did not prefer to walk alone. She was known for her generosity, wisdom, and mentorship. She was not just collegial - she relished collaborating with others to better understanding the circumstances of vulnerable older populations and how to attenuate these impacts."

- Vicki Freedman
and Jennifer Wolff

ABOUT THE CENTER

The Roger C. Lipitz Center for Integrated Health Care is an interdisciplinary collaborative engaged in conducting innovative research, educating the leaders of tomorrow, and translating discoveries into effective policies and practices that improve the quality of care and quality of life of persons with complex health needs and disabilities. The Center is situated within the Department of Health Policy and Management at the nation's top-ranked School of Public Health. With strong connections across the University, most notably with the nation's top-ranked Division of Geriatric Medicine and Gerontology and School of Nursing, the Center is uniquely positioned as a hub of research, policy, and practice initiatives.


The Center possesses a diverse faculty and a research portfolio that encompasses economic evaluation and modeling, policy analysis and synthesis, epidemiological studies, observational analyses, and behavioral interventions. The Center is the home of the National Health and Aging Trends Study and its National Study of Caregiving, an important national resource that was developed to serve as the definitive source of information on disability trends and trajectories in late life. The Center also has a long history of policy work related to payment models and financing of services. Finally, the Center has a tradition of conducting and collaborating to support interdisciplinary interventional research to effect change in care delivery through such models as Guided Care, Hospital at Home, MIND at Home, SHARING Choices, and CAPABLE. Each of these lines of inquiry are important to the current and future research priorities of the Center.

VISION

The Roger C. Lipitz Center for Integrated Health Care will serve as a leader in the development of policies, service delivery, and payment models that contribute to excellence in integrated care for persons with complex care needs and prepare leaders and champions of outstanding integrated care systems.

MISSION

The Center strives to discover and disseminate practical, cost-effective approaches to deliver comprehensive, coordinated, compassionate care to persons with complex care needs and their families.



"The solutions facing people who need post-acute care are becoming more and more complex. I want to make sure that policies in the future will be based on facts, not emotions."

- Roger C. Lipitz

ABOUT THE CENTER

LONG-TERM GOALS

- To conduct research to promote the delivery of comprehensive, coordinated, compassionate, and affordable care to persons with complex care needs and their families.
- To prepare the next generation of scholars, practitioners and administrators to lead the continued integration of care for adults with complex care needs.
- To disseminate new knowledge on integrated care to those in a position to effect change including policy officials, health care leaders, health professionals, and researchers.

HISTORY

The Roger C. Lipitz Center for Integrated Health Care and the Eugene and Mildred Lipitz Professorship were created in 1998 through a generous gift from Roger and Flo Lipitz and the Lipitz Family Foundation to the Johns Hopkins Bloomberg School of Public Health. The Center was established to serve as a catalyst for evidence-informed health policy to benefit the lives of persons with disabilities and complex health needs. The Professorship honors Roger's parents, who were early leaders in nursing home care. Roger continued in this career path and was instrumental in building the field in Maryland, serving as chair of the board of Meridian Healthcare, the largest provider of long-term care services in Maryland at the time, and president of both the American Health Care Association and the Maryland Nursing Home Association. Mr. Lipitz has a longstanding commitment to helping others through civic activities. He is a trustee emeritus of the Johns Hopkins University and former chair of the Johns Hopkins Bloomberg School of Public Health's Advisory Board.

LEADERSHIP

Since 2018, the Roger C. Lipitz Center has been directed by Jennifer Wolff, PhD, MHS, the third Eugene and Mildred Lipitz Professor in the Department of Health Policy and Management, succeeding Karen Davis, PhD (2013-2018) and Chad Boulton, MD, MPH, MBA (2003-2013).

IMPACT

The impact of the Roger C. Lipitz Center for Integrated Health Care is driven by the accomplishments of its members and their research, advocacy and academic pursuits to advance Center mission areas. Center research spans observational and policy analysis at the societal level, to interventional studies of programs and/or services at the individual level.



OUR PEOPLE

FACULTY AND STAFF

14 core faculty: Gerard Anderson, Jeromie Ballreich, Karen Davis (Emeritus), Emmanuel Drabo, Sydney Dy, Chanee Fabius, Judith Kasper, Lauren Nicholas, Daniel Polsky, Lisa Reider, Aditi Sen, Mariana Socal, Amber Willink (Adjunct), Jennifer Wolff

Research Associate, National Health and Aging Trends: Maureen Skehan

Senior Research Program Manager: Diane Echavarria

Research Program Manager: Danny Scerpella

Communications: Munin Streitz

Research Assistants: Valecia Hanna, Amrutha Kadali, and Ambrym Smith

Undergraduate Student Research Assistants: Amy Guo, Margo Chapin, Kora Coker, Sarah Jung

Designer: Anushka Jajodia

Advance Care Planning Facilitators: Keah Crosby

POST-DOCTORAL FELLOWS:

Julia Burgdorf, PhD

Safiyah Okoye, RN, PhD

Danielle Powell, AuD, PhD

Judith Vick, MD, MPH



DOCTORAL STUDENTS:

Jenni Reiff (1st year PhD student)

Andrew Jopson (1st year PhD student)

So-Yeon Kang (2nd year PhD student)

Linda Chyr (3rd year PhD student)

Kelly Anderson (4th year PhD student)

Maningbè Keita (4th year PhD student)

UPDATES AND HIGHLIGHTS

FACULTY



Gerard Anderson, PhD

Anderson is a Professor of Health Policy and Management and International Health who studies chronic conditions, comparative insurance systems in developing countries, medical education, health care payment reform, and technology diffusion. His current work is focused on drug pricing. Prior to arriving at Johns Hopkins, Jerry held various positions in the Office of the Secretary of the U.S. Department of Health and Human Services where he helped to develop Medicare prospective payment legislation. Highlights of this year include the team testifying in Congress several times, in state legislature over 10 items, and presenting to multiple federal agencies on various drug pricing issues. Many people with chronic diseases cannot afford to pay their health care bills and in a series of papers, we have documented that many health care facilities are not providing very much charity care.



Jeromie Ballreich, PhD

Ballreich is an Assistant Scientist of Health Policy and Management with a focus on economic evaluations, pharmaceutical policy, and high-needs high-cost patients. Highlights from this year include publishing a JAMA Open article that modeled the impact of policies to address the opioid epidemic, another JAMA Open article that examined NIH funding allocations, and a Journal of General Internal Medicine article on pharmaceutical research and development. He is also the Director of the MHS in Health Economics and Outcomes Research program, for which he is leading a transformation to broaden the program into three formats to increase enrollment and curricular quality.



Karen Davis, PhD

Davis is a health economist and Emeritus Professor of Health Policy and Management who has deep expertise in federal health policy and health services research. Her current work focuses on Medicare Benefit Design and Long-term Services and Supports. Karen was most recently the 2nd Eugene and Mildred Lipitz Professor and Director of the Roger C. Lipitz Center for Integrated Health Care and previously served as President of The Commonwealth Fund, Chairman of the Department of Health Policy and Management at the School, and Deputy Assistant Secretary for Health Policy in the Department of Health and Human Services.



Emmanuel Drabo, PhD

Drabo is an Assistant Professor of Health Policy and Management who is trained as a health economist. Emmanuel develops and applies economic evaluation techniques to topics related to aging and dementia. This past year, Emmanuel continued to build his portfolio in aging and disability and economic evaluation. He led a Health Affairs study assessing the social return on investment of Bon Secours' "Housing for health" community health program. He presented these findings to the National Health Care for the Homeless Council, and at the Bon Secours's Community Works Quality Committee meeting in March 2021. He published two articles, including one with HSR&P doctoral student So Yeon Kang on the methodological challenges and considerations of COVID-19 policy evaluation. He also presented recent work with HSR&P doctoral student Linda Chyr at the AcademyHealth annual research meeting. Emmanuel is leading one of the awarded NIA-funded HEADS Center year 1 pilot studies.



Sydney Dy, MD, MS, FAAHPM

Dy is a Professor of Health Policy and Management, Medicine and Oncology, and a palliative care physician. Dy focuses on quality of care, safety, and decision-making research, particularly in patients with cancer and serious and terminal illness. She is involved in quality measurement development as well as testing and implementation, particularly in palliative care, as well as patient safety and primary care.



Chanee Fabius, PhD

Fabius, is an Assistant Professor of Health Policy and Management trained in health services research and focuses on improving equity and quality in long-term services and supports. Highlights of this last year include being awarded an NIA-funded IMPACT Collaboratory Career Development Award to support her research to strengthen the direct care workforce and improve the quality and equity of community-based long-term services and supports for older persons with dementia and their family caregivers. Fabius also chaired a panel discussion at the 2020 annual meeting of the Gerontological Society of America, was selected as a panelist for USAgainstAlzheimer's "Investing in Brain Health Equity with Paid Family and Medical Leave," and was an invited guest on a GeriPal podcast episode. Fabius published 2 papers focusing on equity in long-term services and supports and led three pilot studies this year, including one of the HEADS Center's year one pilots. Fabius is the incoming Chair for the Long-Term Services and Supports Interest Group for AcademyHealth.



Judith Kasper, PhD

Kasper is a Professor of Health Policy and Management whose research and teaching interests include disability and long-term care; assessment of needs for care and service provision for those with disability; health care financing and access for vulnerable populations; and the development and application of data sources for health policy and health services research. Kasper leads the National Health and Aging Trends Study, a longitudinal study of older adults, and serves as co-investigator of its companion National Study of Caregiving (NSOC), overseeing data collection and dissemination to the research community at large. Both NHATS and NSOC are funded by the NIA. During the COVID-19 pandemic, NHATS collected annual data collection by phone and conducted a separate mail survey of the impact of COVID-19 on older people and persons who were their helpers. These data are available online along with Round 10 (2020) NHATS data. NHATS was awarded funding to increase representation of Hispanic persons, as is already done for Black persons, starting with the 2022 NHATS sample replenishment. Over 400 publications from NHATS in top journals have contributed to science and policy in aging including on family caregiving for persons with dementia, frailty, trends in disability in late life, end of life care, racial and ethnic disparities in disablement and more. Kasper is participating in the HEADS Center workshop for early investigators using NHATS and NSOC to study dementia caregiving.



Lauren H. Nicholas, PhD, MPP

Nicholas is a health economist whose research focuses on the role of public policy in improving health and healthcare quality for the elderly. Her current research combines survey, administrative, and clinical data to study the interaction between healthcare utilization and economic outcomes. Lauren transitioned to a new role as Associate Professor and Vice Chair for Research in the Department of Health Systems, Management and Policy at the University of Colorado School of Public Health in early 2021.



Daniel Polsky, PhD

Polsky is a health economist and Bloomberg Distinguished Professor of Health Economics who holds joint primary appointments in the Bloomberg School of Public Health and the Carey Business School. Polsky's research focuses on access to health care, economics of the physician workforce, and economic evaluation of medical and behavioral health interventions. Highlights from the last year include securing 5 years of funding for the Johns Hopkins Business of Health Initiative, which works to apply business principles to address the most pressing public health issues. Polsky, with center director Jennifer Wolff, also launched the Hopkins' Economics of Alzheimer's Disease & Services (HEADS) Center to advance population-based science that addresses Alzheimer's Disease and related dementias care and its economic consequences. Polsky continues to publish prolifically in the area of aging, including a recent paper published in *JAMA*, "Private Equity Acquisitions of Physician Medical Groups Across Specialties, 2013-2016." He was also a member of a National Academic panel to tasked to establish a framework for equitable allocation of the COVID-19 vaccine.



Lisa Reider, PhD, MHS

Reider is an Assistant Professor of Health Policy and Management and expert in the design and conduct of multi-center clinical trials. Lisa is the Associate Director of the Coordinating Center of the Major Extremity Trauma and Rehabilitation Consortium (METRC), a Department of Defense-funded network of clinical centers and a data coordinating center that conducts multi-center clinical research studies. She published a study in the *Journal of the American Geriatrics Society* of national trends in extremity fracture hospitalizations among older adults that suggest high energy fractures may be seen with more frequency in the future with implications for prevention, care and recovery. She is co-PI, with physical therapist Kevin McLaughlin, on a grant funded by the Foundation for Physical Therapy Research examining physical therapy frontloading among Medicare beneficiaries and the impact on outcomes using data from NHATS. Reider is also co-investigator on a grant funded by the Orthopaedic Trauma Association to examine the impact of nutritional deficiency on outcomes among older adults following a hip fracture.



Aditi Sen, PhD

Sen is a health economist and Assistant Professor of Health Policy who focuses on the role of innovative payment and delivery models and insurance design in driving the quality and value of health care. Specifically, she is interested in how varying financial, behavioral, and organizational incentives impact provider behaviors, including the “disadoption” of low-value services, prescription of high-price drugs, and provision of mental health services. Sen recently accepted a new role as the Director of Research and Policy at the Health Care Cost Institute (HCCI), an independent, non-profit research institute.



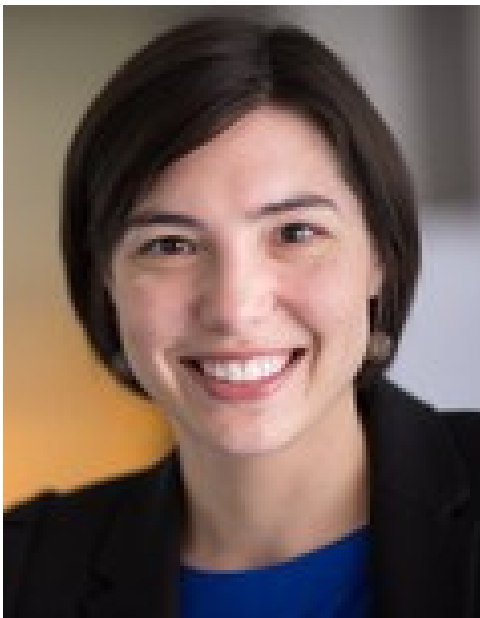
Maureen Skehan, MSPH

Skehan is a Research Associate in the Department of Health Policy and Management and is a core member of the NHATS team. Skehan is highly involved in operational aspects of NHATS. In the last year, Maureen and Lipitz Center colleagues drafted “[The National Health and Aging Trends Study 2021 Research Brief](#)”, highlighting thematic research areas that take advantage of NHATS’ unique design and measurements. She also has contributed to further upgrades of the NHATS and NSOC website, including a searchable [bibliography](#) and a [cross-year database](#) of NHATS metadata. Skehan continues to document and disseminate NHATS and NSOC data files, including Round 10 of NHATS, new data files about older adults’ experiences during the COVID-19 pandemic, and enhanced NSOC files.



Mariana Socal, MD, PhD, MSc, MPP

Socal is an Associate Scientist of Health Policy and Management whose work focuses on strategies to safeguard sustainable, affordable, and appropriate access to pharmaceutical treatments for aging and chronically ill populations in the United States and around the world. Highlights of this past year include testifying at a Congressional hearing on drug pricing and the provisions on H.R.3 and receiving a grant from the Commonwealth Fund to study mail order pharmacies in the Medicare part D program.



Amber Willink, PhD

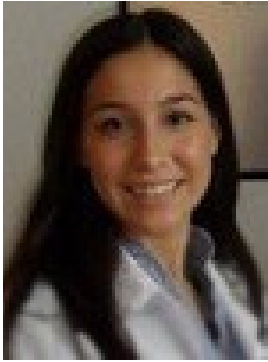
Willink is an Associate Professor at the University of Sydney whose work focuses on issues of access to and cost burdens of non-covered Medicare services. Willink had an exciting last year, relocating from Washington DC to Sydney Australia to begin a new faculty position in February 2020. Amber continues to actively collaborate with Lipitz Center and JHSPH faculty and retains an adjunct faculty appointment. She co-leads an ongoing Commonwealth Fund grant to examine the integration of medical and non-medical services and gaps in Medicare's coverage benefit. She actively engaged in a wide variety of policy activities in the last year, providing technical assistance to the House Ways and Means Committee to develop dental, vision, hearing bill for Medicare and publishing complementary papers in Health Affairs and the Journal of the American Geriatrics Society on hearing care access.



Jennifer Wolff, PhD

Wolff, PhD is the Eugene and Mildred Lipitz Professor of Health Policy and Management, jointly appointed in the Division of Geriatric Medicine and Gerontology in the School of Medicine. Her work focuses on strategies to improve quality of care and life for those living with disability and serious illness and their care partners. She leads two NIA-funded embedded trials to improve advance care planning for older adults with cognitive impairment in primary care, including a pragmatic trial at 55 primary care practices (with Sydney Dy, MPI). New projects include a John A. Hartford Foundation-funded initiative to evaluate the spread of organizational strategies to increase uptake of patient portal use by care partners of older adults, and a leadership award by the National Institute on Aging to better understand and address the needs of caregivers to persons living with dementia through consumer health information technology. Wolff recently served as a member of the NASEM Committee on Care Interventions for Individuals with Dementia and Their Caregivers. Highlights of this year included doctoral student Mani Keita's final defense and launching, with Dan Polsky the Hopkins' Economics of Alzheimer's Disease & Services (HEADS) Center and a new training program Health Services Research for Aging Populations with Cynthia Boyd.

STAFF



Diane Echavarria

Echavarria is a Research Program Manager who has been working at Johns Hopkins for the past fourteen years, spanning work in stroke, cognitive neuropsychology, cancer epidemiology, and research related to the support of families of older adults with complex health needs including cognitive impairment through the Lipitz Center. Echavarria holds a master's degree in Biotechnology, a bachelor's degree in Neuroscience, and a bachelor's degree in Spanish Literature from the Johns Hopkins University. Prior to joining the Center in 2016, Echavarria led a nationwide registry of 6,000 families at risk for pancreatic cancer. Echavarria sits on the event committee for the League for People with Disabilities, with the goal of raising funds for wraparound support services for individuals with disabilities offered by the League.



Danny Scerpella

Scerpella is a Research Program Manager who has been working at Johns Hopkins for the last five years on research focused on older adults living with dementia. He was a key team member on the ADS Plus, CAPABLE, and Dementia Behavior trials at the Center for Innovative Care in Aging in the School of Nursing prior to joining the Lipitz Center. Scerpella has been a co-author on many manuscripts and has championed his own publication and work related to demographic census data and Geographic Information Systems which he has presented at national conferences. He recently authored a published manuscript advancing his previous GIS work focused on a national recruitment effort database in April 2021. His current interests include implementation research and sustainability. Scerpella is currently pursuing the completion of his MPH at the JHSPH part-time.



Ambyrm Smith

Smith is a research assistant who helps with data collection, participant recruitment, and protocol development on a study funded by the National Institute on Aging that seeks to improve advance care planning conversations among older adults with cognitive impairment. Smith is currently completing her Master of Social Work at the University of Maryland with a focus on providing clinical mental health services to older adults and their families. She has previous experience providing mental health services, case management, and advocacy for children and families in New Mexico as well as Baltimore City.



Keah Crosby, BBA, MSW, LCSW-C, CCM

Crosby is currently working in the capacity of an Advance Care Planning Facilitator on two NIA-funded studies to improve communication in primary care for older adults, including those with cognitive impairment. Over the past 7 years, Crosby has worked with Johns Hopkins Healthcare as a Care Manager in various projects to include: the Johns Hopkins Community Health Partnership, Community Health Partnership Baltimore: Community Care Team and Reducing Inequities in the Care of Hypertension: Lifestyle improvements for Everyone (RICH LIFE Project).



Amy Guo

Guo is a recently graduated undergraduate senior of Johns Hopkins University who double majored in Public Health and Applied Math. Guo has worked for the last three years with Center faculty as a research assistant and data collector on embedded trials funded by the Susan G. Komen foundation and National Institute on Aging that seek to improve communication in care and to improve advance care planning in primary care. Amy has been involved in helping to develop papers for peer review publication, and she hopes to utilize her skills learned at the Center as she moves onto the next step of her public health career at the Columbia University Mailman School of Public Health to pursue her MPH in Health Policy and Management.



Margo Chapin

Chapin is a rising senior at Johns Hopkins University majoring in Public Health and Economics. Chapin has worked as a research assistant and data collector on the SHARE study. This summer Chapin interned for the Baltimore-based healthcare consulting firm Discern Health where she learned about value-based healthcare and developed her research and professional communication skills. She is looking forward to employing these skills as she continues her work for the Center in the fall.



Anushka Jajodia

Jajodia is a social justice-centered designer who practices participatory design research and storytelling through visual design, illustration, writing, and photography. She cares about supporting individuals, initiatives, and organizations with a radical vision to dismantle the status quo. After pursuing a Master's in Social Design from Maryland Institute College of Art, she worked with the PROMOTE Center (Johns Hopkins School of Nursing) and the Cochlear Center for Hearing and Public Health (Johns Hopkins Bloomberg School of Public Health). She worked with a multidisciplinary team of researchers, clinicians, and public health experts to infuse a community-centered approach that advances equity to develop sustainable health care initiatives for older adults and their families with multiple chronic conditions and hearing loss. Supporting caregivers' wellbeing and acknowledging their journey is close to her heart. She continues to embrace the path of learning and supporting anti-oppressive practices.



Munin Streitz, MPH

Streitz supports communications activities for the Center and is a communications specialist for the Department of Health Policy and Management at the Johns Hopkins Bloomberg School of Public Health. Over the past year, Streitz has grown the Center's social media presence, continued messaging through the website and quarterly Newsletter, and collaborated on two new Center briefs with Center faculty. She has six years of communications, marketing, and project management experience and earned her MPH specializing in public health communications and marketing from George Washington Milken Institute School of Public Health.



Sarah Jung

Jung is a rising junior at Johns Hopkins University who is majoring in Neuroscience. Jung volunteers in the Emergency department at Mercy Medical Center and in the Oncology department at the Johns Hopkins Hospital. She has worked as a research assistant in the Haganir laboratory that investigates synaptic plasticity in the brain and in the Johns Hopkins Neuro-Oncology Surgical Outcomes laboratory to help collect data on patient quality of life. She hopes to implement her patient follow up experience in studies conducted by the Center.



Kora Coker

Coker is a rising junior at Johns Hopkins University who is majoring in Medicine, Science, and the Humanities. Coker has volunteered for several years at her local hospital and is passionate about patient advocacy and resolving inequities in healthcare. This summer, Coker began to work as a research assistant for a program funded by the National Institute on Aging that aims to improve communication and advance care planning for older adults in primary care. She looks forward to continuing to learn and develop throughout her time at the Center.



Amrutha Kadali

Kadali has been assisting in coordination, participant recruitment, enrollment, and staff training on two projects that focus on improving communication surrounding advance care planning among older adults living with cognitive impairment. She has experience working with Parkinson's patients in research she was a part of during her undergraduate studies at the University of Virginia and will be pursuing her Master's in Healthcare Administration at George Washington University in the fall with the aim of focusing on geriatric care.



Valecia Hanna

Hanna is a full-time research assistant who helps with participant recruitment, data collection and data maintenance on a study that seeks to improve communication between adults and families and their primary care team. Valecia received a master's and bachelor's degree in Sociology from Morgan State University. During her undergraduate and graduate experience, she participated in multiple research studies primarily focused on reducing crime and violence, and providing resources for African American youth in Baltimore City through internships and research assistantships. Most recently, she served as a graduate research assistant on the Safe Streets Baltimore violence prevention and interruption program that collaborated with Johns Hopkins University.

TRAINEES



Julia Burgdorf, PhD

Burgdorf is a postdoctoral fellow in the Department of Health Policy & Management. Her research leverages linked survey, assessment, and claims data to examine the interaction of family caregiving and home-based care for high-need older adults. In September 2021 she will transition to a Research Scientist position at The Center for Home Care Policy & Research at the Visiting Nurse Service of New York, while staying on in a research position at the Department of Health Policy & Management and maintaining active research collaborations with Lipitz Center faculty. Over the past year, Burgdorf published 5 first-author manuscripts, was named a NIA Ruth L. Kirschstein postdoctoral fellow, served as PI on a project funded by the HEADS Center, Alliance for Home Health Quality and Innovation, and Visiting Nurse Service of New York, and was among 12 early career researchers selected for the 2021 Alzheimer's Association Interdisciplinary Summer Research Institute.



Safiyyah Okoye, PhD, MSN, NP-C

Okoye is a postdoctoral research fellow. Prior to her fellowship, Okoye worked in primary care as a family nurse practitioner and earned her PhD at the Johns Hopkins University School of Nursing. Okoye's research seeks to eliminate health disparities among older adults by better understanding the structural influences on health and function. Highlights of the past year include presenting research at the 2020 Gerontological Society of America Scientific Meeting and publishing papers related to projects that draw on data from the NHATS linked with area-level data from the U.S. Census Bureau American Community Survey to study the home and neighborhood environmental context of older adult health and function; specifically accidental falls and older adults' telehealth use. Her fellowship is currently supported by the NIA through the Epidemiology and Biostatistics of Aging Training Program.



Danielle Powell, AuD, PhD

Powell is a postdoctoral fellow who earned her PhD in Epidemiology from Johns Hopkins School of Public Health and her Doctorate of Audiology from the University of North Carolina- Chapel Hill. Prior to beginning her doctoral studies, Danielle worked as a clinical audiologist in Washington for several years. Her prior research investigated the association between hearing loss and late-life depression and cognitive decline among older adults. Her current research interests include two areas 1) the role of hearing loss or sensory loss and communication among those with dementia and their caregivers and subsequent interaction with the healthcare system and 2) how intervening on sensory loss for inpatients may prevent or delay in-hospital delirium as well as transitions to dementia upon discharge. Her goal is to use her research to understand how we may better support older adults with hearing loss as they interact with the healthcare system and to improve long-term health outcomes. Powell's work is currently supported by the Health Services and Outcomes Research T32 Fellowship Program.



Judith Vick, MD, MPH

Vick is a resident physician, researcher, writer, and family caregiver. She is a graduate of the Bloomberg School of Public Health MPH program (2018) and Johns Hopkins University School of Medicine (2019). Prior to matriculating at Hopkins, she worked for the Writing and Speaking Programs at Barnard College (her alma mater) and conducted research at the Massachusetts General Hospital Center for Women's Mental Health and with the Serious Illness Care Program at the Dana-Farber Cancer Institute, Ariadne Labs, and the Harvard School of Public Health. Vick's current work seeks to identify and intervene in the social and psychological factors that constrain healthcare delivery in the U.S. healthcare system, specifically focusing on family caregivers. She recently started her third and final year of residency in Internal Medicine in the Osler Medical Residency at the Johns Hopkins Hospital.

DOCTORAL STUDENTS



Kelly Anderson, MPP

Anderson recently defended her dissertation on access to, and utilization of, physician-administered drugs for enrollees with fee-for-service coverage compared to Medicare Advantage coverage. She will be joining the faculty at the University of Colorado as an Assistant Professor this fall where her research will focus on Medicare insurance design and prescription drug pricing. Over the past year, she has published papers on prescribing of Part B drugs, forgone medical care during the COVID-19 pandemic, and the quality of care for individuals with opioid use disorder.



Linda Chyr

Chyr is rising 4th year PhD Candidate in Health Services Research and Policy. Linda's dissertation focuses on understanding trends, predictors, and impacts of care transitions among older adults with the aim of improving policies on long-term services and supports. This past year, Chyr defended her dissertation proposal and is diligently working through her dissertation aims. Beyond her dissertation work, Chyr worked on an Agency for Healthcare Research and Quality funded systematic review that was published in February 2021 and was co-authored on an accompanying manuscript in the American Journal of Hospice and Palliative Medicine. She led another manuscript on this work that is accepted for publication and forthcoming in Annals of Family Medicine. Most recently, she presented an abstract at the annual AcademyHealth Research Meeting on analyzing survey-based measures of dementia in the National Health and Aging Trends Study. Chyr was 2021 recipient of the Pearl and Jeremiah German Scholarship in Gerontology.



Andrew Jopson

Jopson is a 2nd year health services research and policy doctoral student. Andrew earned his bachelor's degree at UC Berkeley and MPH at the University of Washington. He previously worked as research scientist in the Department of Family Medicine at the University of Washington where he focused on issues related to the health workforce and developing health career pathways. He recently published this work in the Journal of Health Care for the Poor and Underserved and presented findings at the virtual Beyond Flexner Conference in April. As a doctoral student, his research focuses on ways to improve the delivery of home and community-based services for older adults and persons with disabilities. He is supported by the AHRQ NRSA training grant program.



So Yeon Kang

Kang is a third-year health services research and policy Ph.D. student with a Master of Business Administration and a Master of Public Health degrees from Johns Hopkins University. Kang is interested in studying health policy at the intersection of public health and business, particularly consumer welfare implications of pharmaceuticals, health technology and care delivery models. Her work with Lipitz faculty members has been published in outlets such as JAMA and Health Affairs. Kang previously worked in the pharmaceutical industry holding various positions in pharmaco-economic research and market access.



Maningbè Berete Keita Fakeye, PhD

Fakeye is a 4th year health services research and policy Ph.D. candidate. Fakeye's research seeks to improve health and economic outcomes of older adults and their caregivers and to translate her research into equitable policy changes. Her work is currently supported by the Robert Wood Johnson Foundation and the Center for Equitable Growth. This last year has been one for the books in reminding Fakeye of the significance of the little things. In light of an infectious disease pandemic and heightened awareness around injustices related to racial equity, Fakeye is extremely proud to have prioritized her health and wellbeing, defended her dissertation, and earned her PhD. She is also grateful to have secured a position as a Presidential Fellow in the Office of the Provost at the Johns Hopkins University, where she will apply her doctoral training towards integrating equity in organizational leadership and productivity.



Jenni Seale Reiff

Reiff is a full-time MPH student who holds a Master's Degree in Occupational Therapy from the University of North Carolina and a Bachelor's Degree in Sociology from Emory University. This year, Reiff worked with Dr. Jennifer Wolff on a randomized control trial of advanced care planning facilitation for older adults with cognitive impairment and their care partners, with Dr. Sarah Szanton on a randomized waitlist-control pilot adapting the CAPABLE program to promote aging in place for older adults with cognitive impairment, and with Dr. Lisa Reider and Dr. Julia Burgdorf on a secondary data analysis examining the prevalence and value of frontloading physical therapy visits for older adults in post-acute home healthcare. Jenni will complete a certificate in Gerontology this year, and she has built connections in clinical geriatrics at Johns Hopkins by joining the Frailty and Multisystem Dysregulation working group and attending Geriatric Grand Rounds as a guest of Dr. Cynthia Boyd.



RESEARCH SUPPORT

The Center's portfolio of scholarly activities is supported by 3 streams of funding: 1.) the Roger C. Lipitz Center endowment, 2.) Departmental support of faculty teaching and service activities, and 3.) private foundation and governmental agency funding of investigator-initiated research studies. Our research portfolio encompasses four sets of activities as follows:

Domain #1. Sustain and enhance the National Health and Aging Trends Study and its linked National Study of Caregiving as a platform for research.

Domain #2. Conduct policy analyses of system change to support improved care delivery for persons with complex health needs and disabilities and their families.

Domain #3. Conduct economic analyses related to reform of financing services for people with complex care needs including Medicare and Medicaid reform, long-term care insurance, and provider payment incentives for integrated care.

Domain #4: Interventional research related to behavioral and systems-change improvements in care delivery and effects on outcomes that matter for individuals, families, and society.

The following text provides a list of research grants that were active or awarded in the reporting period that are led by core faculty and trainees, or for which core faculty are key personnel in a mentoring capacity. This list is ordered alphabetically by the last name of the study PI.

Title: Health Services Use and Outcomes in Older Adults with Dementia Living Undiagnosed or Unaware of Dementia

Sponsor: National Institute on Aging

Principal Investigator: Halima Amjad (Jennifer Wolff, Co-Investigator/Mentor, Mariana Socal)

Date: 04/01/2019-01/31/2021

Amount: \$100,000

Objective: This study will shed light on how lack of diagnosis or awareness of dementia affects patients, families, and health systems through emergency department visits, hospitalizations, and healthcare spending. Results will highlight important outcomes and specific populations that might benefit from earlier, transparent diagnosis of dementia.

Title: Lowering Health Care Prices In the Private Sector

Sponsor: The Arnold Foundation

Principal Investigator: Gerard Anderson (Aditi Sen Co-Investigator)

Date: 09/01/2018-03/01/2021

Amount: \$841,754

Objective: The purpose of this project is to develop legislative and regulatory approaches to set a maximum price that hospitals and physicians can charge. By reducing the amount of money going to hospitals and physicians, total U.S. health care spending will be lower. Working with five states, the research seeks to assist states with the development of effective policy solutions to reduce prices.

Title: Lowering Drug Prices By Phasing Out Rebates

Sponsor: Arnold Ventures

Principal Investigator: Gerard Anderson and Mariana Socal, Co-Principal Investigators

Date: 2018-2021

Amount: \$700,000

Objective: Implement strategies to reduce wasteful spending on pharmaceuticals.

Title: Johns Hopkins Drug Access and Affordability Initiative

Sponsor: Laura and John Arnold Foundation

Principal Investigator: Gerard Anderson (Jeromie Ballreich, Mariana Socal, Aditi Sen Co-investigators)

Date: 5/1/2019 – 12/31/2022

Amount: \$4,251,144

Objective: The purpose of this project is to continue work done in a previous grant that examines the impact of drug prices on access and affordability and develop policy options within the United States.

Title: Policy Options that Maximize Access to and Affordability of Prescription Drugs
Sponsor: Arnold Ventures
Principal Investigator: Gerard Anderson (Mariana Social Co-investigators)
Date: 2019-2022
Amount: \$3,586,034
Objective: The purpose of this project is to continue work done in a previous grant that examines the impact of drug prices on access and affordability and develop policy options within the United States.

Title: Program for Medical Technology and Practice Assessment
Sponsor: The Johns Hopkins Hospital and Medical School
Principal Investigator: Eric Bass and Gerard Anderson, Co- Principal Investigators
Dates: 1986-present
Amount: \$14,000,000 (approximately - ongoing)
Objective: To comparatively examine specific medical technologies and programs

Title: Optimal Medication Management in Alzheimer's Disease and Dementia
Sponsor: National Institute on Aging R21/R33AG057289
Principal Investigator: Cynthia Boyd and Bayliss (Mariana Social and Jennifer Wolff Co- Investigators)
Dates: 06/30/2017-05/31/2022
Amount: \$275,000
Objective: This study will refine and test a patient-centered and pragmatic de-prescribing intervention for persons with ADRD.

Title: Effectiveness of a remotely-delivered health coaching intervention for preventing excessive gestational weight gain among overweight and obese women in prenatal care.
Sponsor: NIH and NIDDK
Principal Investigator: Wendy Bennett (Emmanuel Drabo)
Date: 2020 - 2025
Amount: \$499,991
Objective: To prevent obesity and its intergenerational effects by promoting healthy gestational weight gain (GWG) and postpartum weight loss in a racially and economically diverse population of women with high rates of pre-pregnancy overweight/obesity.

Title: Vaccine Economics: Economic Evaluation
Sponsor: The Bill & Melinda Gates Foundation
Principal Investigator: David Bishai (Emmanuel Drabo)
Date: 2017 - present
Amount: \$1,500,000
Objective: To develop an economic evaluation curriculum in global vaccine economic evaluation.
Principal Responsibilities: Instruct vaccine economics workshops in Ouagadougou, Burkina Faso, with the goal of building capacity for immunization decision-making in francophone Africa.

Title: Challenges and Best Practices in Delivering Family Caregiver Training during Medicare Home Health
Sponsor: Alliance for Home Health Quality and Innovation
Principal Investigator: Julia Burgdorf
Dates: 07/2020-07/2021
Amount: \$77,373
Objective: To identify challenges and best practices related to delivering family caregiver training during Medicare-funded home health episodes

Title: Cognitive Impairment and Resource Utilization Among Medicare Home Health Patients
Sponsor: Eugenie and Joseph Doyle Research Partnership Fund, Visiting Nurse Service of New York
Principal Investigator: Julia Burgdorf
Dates: 07/2020-07/2021
Amount: \$10,000
Objective: To examine trends in home health visits for older adults with and without cognitive impairment.

Title: Assessing State Variability in Measures of Dementia Prevalence
Sponsor: HEADS Center National Institute on Aging
Principal Investigator: Emmanuel F. Drabo
Date: 2020 - 2021
Amount: \$21,500
Objective: Generate new and more robust estimates of state-level measures of Alzheimer's Disease and Related Dementias (ADRD) prevalence and assess potential variability in prevalence from multiple national datasets (American Community Survey, Behavioral Risk Factor Surveillance System, National Health Interview Survey, and Medicare Claims) with both self-reported measures and diagnosed ADRD.

Title: Evaluation of the Primary Care First Model
Sponsor: Center for Medicare & Medicaid Services
Principal Investigator: Sydney M. Dy, site PI
Date: 9/16/19 - 9/15/2025
Amount: \$900,000 direct for subcontract
Objective: The goal of this project is to evaluate CMS's new Primary Care First and Serious Illness Population model.

Title: Achieving Excellence in Biopsychosocial Cancer Pain Management Through a Comprehensive Quality Education Program
Sponsor: National Cancer Institute
Principal Investigator: Sydney M. Dy
Date: 9/1/2018 - 8/31/2023
Amount: \$1,500,000
Objective: To educate health care professionals on non-opioid approaches to cancer pain management.

Title: What is Patient Safety in the Medical Home?

Sponsor: Agency for Health Care Research and Quality

Principal Investigator: Sydney M. Dy

Date: 9/30/16 - 8/31/20

Amount: \$1,500,000

Objective: To evaluate the implementation of patient safety in a national sample of primary care medical homes using mixed-methods approaches.

Title: Integrating Palliative Care with Chronic Disease Management in Ambulatory Care

Sponsor: Agency for Healthcare Research and Quality

Principal Investigator: Sydney M. Dy (Lauren Nicholas, Co-Investigator)

Date: 4/21/19-8/1/20

Amount: \$470,000

Objective: The goal of this project is to conduct an integrative review on palliative care in chronic illness.

Title: Training in Health Services Research

Sponsor: Agency for Healthcare Research and Quality

Principal Investigator: Sydney M. Dy

Date: 7/1/18-6/30/23

Amount: \$465,240, annually

Objective: The goal of this project is to train predoctoral students in health services research and policy.

Title: Surveying Direct Care Agencies in Maryland to Examine Quality of Life of Older Medicaid Home and Community-Based Service Recipients with Alzheimer's Disease and Related Dementias (ADRD)

Sponsor: Johns Hopkins Alzheimer's Disease Resource Center for Minority Aging Research

Principal Investigator: Chanee Fabius

Dates: September 1, 2020- August 31, 2021

Amount: \$30,000

Objective: This project will conduct a statewide survey of direct care organizations in Maryland to examine organizational characteristics and supports for direct care workers, and link survey data to consumer Maryland Medicaid data to examine the associations because organizational characteristics and quality of life outcomes for those with ADRD.

Title: Place-Based Effects on Race Differences in the Use of Paid and Unpaid Care, Social Participation, and Caregiver Burden for Older Adults with Disabilities and their Family Caregivers

Sponsor: Hopkins Center for Health Disparities Solutions (HCHDS)

Principal Investigator: Chanee Fabius

Dates: September 1, 2020- August 31, 2021

Amount: \$49,993

Objective: This project will describe race differences in the use of paid and/or unpaid help, social participation and caregiver burden after assessing the contribution of individual, interpersonal, community, and societal factors for black and white older adults with disabilities and their family and unpaid caregivers

Title: Engaging and Integrating Direct Care Workers in Care Delivery for Persons Living with Dementia in the Community

Sponsor: National Institute on Aging IMPACT Collaboratory

Principal Investigator: Chanee Fabius

Date: 07/01/2021 - 6/30/2023

Amount: \$220,000

Objective: The proposal will support Dr. Fabius' long-term career goal to become an independent investigator conducting high-impact embedded pragmatic clinical trials (ePCTs) directed at testing policies and programs to better support direct care workers and improve care quality and quality among those receiving services, including persons living with dementia and their family caregivers.

Title: Faculty Innovation Fund

Sponsor: Johns Hopkins Bloomberg School of Public Health

Principal Investigator: Chanee Fabius

Date: 9/1/2020-8/31/2021

Amount: \$31,862

Objective: This project will survey direct care agencies in one state, link survey responses to older adult assessment data, and describe the variability in the quality of life of older Home and Community-Based Service recipients across direct care agency characteristics.

Title: Race Differences in Supportive Service Utilization by White and Black Caregivers of Persons with ADRD

Sponsor: Hopkins' Economics of Alzheimer's Disease and Services (HEADS) Center National Institute on Aging

Principal Investigator: Chanee Fabius

Date: 8/1/2020-6/30/2021

Amount: \$22,730

Objective: The goal of this project is to determine whether the use of supportive services varies by race for black and white caregivers of persons with ADRD.

Title: Multi-center phase 2 trial to test ability for stem cell therapy to induce palmo-plantar skin at the stump site of amputees

Sponsor: Department of Defense

Principal Investigator: Luis Garza (Lisa Reider METRC PI)

Dates: September 1, 2018- August 31, 2022

Amount: \$6,408,838

Objective: The purpose of this study is to test the safety and efficacy of volar fibroblast injections for increasing epidermal thickness at the stump site in transtibial amputees.

Title: National Health and Aging Trends Study (NHATS)

Sponsor: National Institute on Aging

Principal Investigator: Judith Kasper

Dates: 09/30/2008 - 03/31/2024

Amount: \$45 million

Objective: NHATS is a platform for scientific inquiry to guide efforts to reduce disability, maximize functioning, and enhance older adults' quality of life.

Title: Caregiving for Alzheimer's Disease and Related Dementias: Enhancing the National Study of Caregiving (NSOC).

Sponsor: National Institute on Aging (NIA)

Principal Investigator: Judith Kasper (Jennifer Wolff, Co-Investigator)

Dates: 09/1/2016 - 06/30/2021

Amount: \$4.45 million

Objective: To enhance understanding of caregiving to older adults with Alzheimer's Disease and Related Dementias through new national longitudinal data.

Title: Examining the Relationship Between Caregiving and Work Productivity Loss Among Employed Family Caregivers of Older Adults

Sponsor: Center for Equitable Growth

Principal Investigator: Mani Keita

Dates: 07/2019-07/2020

Amount: \$15,000

Objective: This project examines how family caregiving to an older adult affects productivity at work and whether historically marginalized subgroups of working caregivers face an increased and inequitable risk of work productivity loss.

Title: Health Policy Research Scholars Program

Sponsor: Robert Wood Johnson Foundation

Principal Investigator: Mani Keita

Dates: 09/2018-08/2023

Amount: \$120,000

Objective: This program will support Mani's work on evaluating the economic and social implications of chronic disease management in older adults and caregivers.

Title: The Major Extremity Trauma and Rehabilitation Research Consortium (METRC III)

Sponsor: Department of Defense

Principal Investigator: Ellen MacKenzie (Lisa Reider, Co-Director of Consortium)

Dates: September 30, 2016 – September 30, 2021

Amount: \$17,969,441

Objective: The overall objective of the METRC Consortium is to produce the evidence needed to improve care and outcomes of major orthopaedic trauma along the treatment continuum, from acute care at the time of injury through recovery, rehabilitation and re-integration into the workforce and society.

Title: Understanding and Respecting End-of-Life Treatment Preferences Among Older Adults with Alzheimer's Disease and Related Dementias (ADRD)

Sponsor: National Institute on Aging

Principal Investigator: Lauren H. Nicholas

Dates: 2018 – 2022

Amount: \$2,569,076

Objective: This grant studies surrogate decision-making for ADRD patients to better inform the advance care planning process and communication with surrogates. Results from this study can help to design interventions to increase the likelihood that a patient engaging in advance care planning has the conversations or prepares the documents that allow family, friends, and clinicians to act in a patient's best interest after dementia onset. Findings can also inform decision-making when advance care planning may no longer apply or was not completed.

Title: Financial Consequences of Health and Healthcare Spending Among Older Couples

Sponsor: Social Security Administration

Principal Investigator: Lauren H. Nicholas

Date: 2019 – 2020

Amount: \$75,000

Objective: Dementia-linked adverse financial events have the potential to deteriorate retirement savings, increasing financial strain and potentially demand for Medicaid and Supplemental Security Income. Findings from this study will provide SSA with important information about the impacts of dementia on the financial well-being of married couples and provide baseline information about the co-movement of spousal credit outcomes.

Title: Characterization and Effects of Coexistence of Care Management Programs for High Need High Cost Older Adults

Sponsor: National Institute on Aging

Principal Investigator: Stephanie Nothelle (Cynthia Boyd and Jennifer Wolff Co-Mentors)

Dates: August 1, 2018-July 31, 2021

Amount: \$100,000

Objective: This study aims to evaluate the nature, scope and effects of co-existing care management programs on high need, high cost older adults, which will inform the development and evaluation of best practices to improve population health and individual care of high need, high cost older adults..

Title: Effect of Early Weight Bearing on Rehabilitation Outcomes in Patients with Unicondylar Proximal Tibia Fractures and Bimalleolar Ankle Fractures

Sponsor: Department of Defense

Principal Investigator: William Obremsky (Lisa Reider METRC PI)

Dates: October 1, 2018-September 30, 2022

Amount: \$4,500,000

Objective: The proposed study aims to compare the effects of early weight bearing versus delayed weight bearing for patients sustaining ankle and tibia plateau fractures.

Title: Hopkins' Economics of Alzheimer's Disease and Services (HEADS) Center

Sponsor: National Institute on Aging

Principal Investigator: Daniel Polsky & Jennifer Wolff (MPI),

Date: 7/01/2020-6/31/2025

Amount: \$2,500,000 direct

Objective: The Hopkins' Economics of Alzheimer's Disease & Services (HEADS) Center builds the field of ADRD-related economics and health services research and its impact through training emerging and established investigators, developing research infrastructure, and forging linkages with policy and practice communities to disseminate new knowledge)

Title: National Estimates of Incidence Trends and Costs Due to Injurious Falls Among Older Adults

Sponsor: CDC: Johns Hopkins Center for Injury Research and Policy

Principal Investigator: Lisa Reider (MPI with Joe Levy)

Date: 8/1/2020-7/31-2021

Amount: \$35,000

Objective: To identify trends and costs associated with injurious falls among a national sample of older adults in the United States.

Title: Linking 1940 US Census Data to Five Modern Surveys of Health and Aging.

Sponsor: National Institute on Aging

Principal Investigator: Warren, Univ of Minnesota (Judith Kasper, Site PI)

Dates: 01/1/2016-12/31/2020

Amount: \$290,000

Objective: Link NHATS participants 75 and older to 1940 Census and develop data files.

Title: Services not Covered by Medicare: Unmet Beneficiary Needs and Potential Policy Reforms

Sponsor: The Commonwealth Fund

Principal Investigator: Amber Willink (Jennifer Wolff, Judy Kasper, Chanee Fabius, Karen Davis, Mariana Social Co-Investigators)

Date: 09/01/2019-02/28/2021

Amount: \$294,990

Objective: This project will inform Medicare benefit reform considerations to include dental, vision, hearing, and long-term services and supports in order to better reflect the growing and diverse needs of the aging population.

Title: Pragmatic Trial to Improve Communication for Primary Care Patients with ADRD

Sponsor: National Institute on Aging

Principal Investigator: Jennifer Wolff & Sydney M. Dy (MPI)

Amount: \$3,000,000 direct costs

Date: 09/01/2018-08/31/2023

Objective: This study will refine and test the effectiveness of an advance care planning intervention for older adults with ADRD through proactive engagement of families in primary care.

Title: Trends and Dynamics in Caregiving for Alzheimer's Disease and Related Dementias: Extending the National Study of Caregiving

Sponsor: National Institute on Aging

Multi-Principal Investigator: Jennifer Wolff & Vicki Freedman

Dates: 04/01/2019-03/31/2024

Amount: \$9,193,844 direct costs

Objective: This project will collect and disseminate new longitudinal national data to enhance understanding of informal caregiving to older adults with ADRD. The study will also provide new knowledge of how informal ADRD caregivers' experiences and outcomes are changing over recent (2011-2020) and longer-term (1999-2020) time periods.

Title: Involving Family to Improve Advance Care Planning for Primary Care Patients with ADRD

Sponsor: National Institute on Aging

Principal Investigator: Jennifer Wolff (Sydney M. Dy coinvestigator)

Date: 7/29/19 - 3/31/24

Amount: \$2,107,205 direct costs

Objective: This study will refine and test the effectiveness of an advance care planning and communication intervention for high-risk older adults with ADRD.

Title: Engaging Family Caregivers through Shared Access to the Electronic Health Record: Planning for Transformational Change

Sponsor: John A. Hartford Foundation

Multi-Principal Investigator: Jennifer Wolff & Cait DesRoches of Harvard BIDMC (Mariana Social MPI)

Date: 1/1/2020-6/30/2021

Amount: \$364,656 direct costs

Objective: This planning phase project will establish the partnerships, resources, and a proposal detailing the plan to launch and evaluate a subsequent demonstration to test the effects of organizational strategies to spread shared access for family caregivers to the electronic health record.

Title: Engaging Family Caregivers through Shared Access to the Electronic Health Record

Sponsor: John A. Hartford Foundation

Multi-Principal Investigator: Jennifer Wolff & Cait DesRoches of Harvard BIDMC

Date: 7/1/2021-6/30/2024

Amount: \$1,476,784

Objective: This project implements a demonstration in three health systems to increase the uptake and use of shared electronic health record access by family caregivers of older adults, evaluate its effects and disseminate best practices to promote national adoption.

Title: Consumer Health Information Technology to Engage and Support ADRD Caregivers: Research Program to Address ADRD Implementation Milestone 13.I

Sponsor: NIA R35AG072310

Principal Investigator: Jennifer Wolff

Date: 7/15/2021-06/30/2026

Amount: \$2,995,000 direct

Objective: This application builds a program of health services research at Johns Hopkins University to address Alzheimer's Disease and Related Dementias Implementation Milestone 13.I to support research on technology-based dementia assessment, care, and management.

Title: Health Services and Outcomes Research for Aging Populations (T32 AG066576)

Sponsor: National Institute on Aging

Multi-Principal Investigator: Jennifer Wolff & Cynthia Boyd

Date: 7/1/2020- 6/31/2025

Amount: \$2,500,000

Objective: We propose an innovative, interdisciplinary training program to produce the next generation of researchers with robust training in person and family-centered health services and outcomes research, all applied to geriatrics and gerontology.

"We are so grateful for all our sponsors who allow us to discover and disseminate practical, cost-effective approaches for comprehensive, coordinated, compassionate care to persons with complex care needs and their families.

- Jennifer Wolff

Eugene and Mildred
Lipitz Professor
Director, Roger C. Lipitz
Center for Integrative
Health Care



PEER - REVIEWED RESEARCH

The following peer-reviewed publications are authored by Center faculty, trainees, and doctoral students. Papers marked with a "*" were led by a Center trainee or doctoral student. This list is ordered alphabetically by the last name of the researcher.

Abshire MA, Nolan MT, Dy SM, Gallo JJ. What matters when doctors die: A qualitative study of family perspectives. *PLoS One*. 2020 Jun 23;15(6):e0235138.

Abu Al Hamayel N, Waldfoegel JM, Hannum SM, Brodsky RA, Bolaños-Meade J, Gamper CJ, Jones RJ, Dy SM. Pain Experiences of Adults With Sickle Cell Disease and Hematopoietic Stem Cell Transplantation: A Qualitative Study. *Pain Med*. 2021 Aug 6;22(8):1753-1759.

Amjad H, Mulcahy J, Kasper JD, Burgdorf J, Roth DL, Covinsky K, Wolff JL. Do Caregiving Factors Affect Hospitalization Risk Among Disabled Older Adults? *J Am Geriatr Soc*. 2021 Jan;69(1):129-139.

*Anderson KE, Alexander GC, Niles L, Scholle S, Saloner B, Dy SM. Quality of preventive and chronic illness care for insured adults with opioid use disorder. *JAMA Network Open*, 2021; 4(4): e214925.

*Anderson KE, Saloner B, Eckstein J, Chaisson CE, Scholle SH, Niles L, Dy S, Alexander GC. Quality of Buprenorphine Care for Insured Adults with Opioid Use Disorder. *Medical Care*, 2021; 59(5): 393-401.

Aranda MP, Kremer IN, Hinton L, Zissimopoulos J, Whitmer RA, Hummel CH, Trejo L, Fabius C. Impact of dementia: Health disparities, population trends, care interventions, and economic costs. *J Am Geriatr Soc*. 2021 Jul;69(7):1774-1783.

Bai G, Yehia F, Anderson GF. Charity Care Provision by US Nonprofit Hospitals. *JAMA Intern Med*. 2020 Apr 1;180(4):606-607.

Bai G, Yehia F, Chen W, Anderson GF. Varying Trends In The Financial Viability Of US Rural Hospitals, 2011-17. *Health Aff (Millwood)*. 2020 Jun;39(6):942-948.

Ballreich JM, Gross CP, Powe NR, Anderson GF. Allocation of National Institutes of Health Funding by Disease Category in 2008 and 2019. *JAMA Netw Open*. 2021 Jan 4;4(1):e2034890.

Ballreich J, Mansour O, Hu E, Chingcuanco F, Pollack HA, Dowdy DW, Alexander GC. Modeling Mitigation Strategies to Reduce Opioid-Related Morbidity and Mortality in the US. *JAMA Netw Open*. 2020 Nov 2;3(11):e2023677.

Ballreich J, Jin J, Kundu P, Chatterjee N. Provider and Patient Characteristics of Medicare Beneficiaries Who Are High-Risk for COVID-19 Mortality. *J Gen Intern Med*. 2021 Jul;36(7):2189-2190.

Barthold D, Joyce G, Ferido P, Drabo EF, Marcum ZA, Gray SL, Zissimopoulos J. Pharmaceutical Treatment for Alzheimer's Disease and Related Dementias: Utilization and Disparities. *J Alzheimers Dis*. 2020;76(2):579-589.

Bayliss EA, Shetterly SM, Drace ML, Norton J, Green A, Reeve E, Weffald L, Wright L, Maciejewski ML, Sheehan OC, Wolff JL, Gleason KS, Kraus C, Maiyani M, Du Vall M, Boyd CM. The OPTIMIZE Patient- and Family-Centered, Primary-Care Based Deprescribing Intervention for Older Adults with Dementia or Mild Cognitive Impairment and Multiple Chronic Conditions: Study Protocol for a Pragmatic Cluster Randomized Controlled Trial. *Trials*; 2020 21(1).

Best MJ, Aziz KT, McFarland EG, Anderson GF, Srikumaran U. Economic implications of decreased elective orthopaedic and musculoskeletal surgery volume during the coronavirus disease 2019 pandemic. *Int Orthop*. 2020 Nov;44(11):2221-2228.

*Burgdorf JG, Mroz TM, Wolff JL. Social Vulnerability and Medical Complexity among Medicare Beneficiaries Receiving Home Health without Prior Hospitalization. *Innovation in Aging*; 2020: 4(6).

*Burgdorf JG, Stuart E, Arbaje AI, Wolff JL. Family Caregiver Training Needs and Medicare Home Health Visit Utilization. *Medical Care*; 2021 59 (4): 341-347.

*Burgdorf JG, Arbaje AI, Stuart E, Wolff JL. Unmet Family Caregiver Training Needs Associated with Acute Care Utilization during Home Health Care. *Journal of the American Geriatrics Society*; in press.

*Burgdorf JG, Fabius CD, Riffin C, Wolff JL. Receipt of Posthospitalization Care Training Among Medicare Beneficiaries' Family Caregivers. *JAMA Netw Open*. 2021 Mar 1;4(3):e211806.

*Burgdorf JG, Arbaje AI, Wolff JL. Training Needs Among Family Caregivers Assisting During Home Health, as Identified by Home Health Clinicians. *J Am Med Dir Assoc*; 2020; 21(12): 1914-1919.

*Chyr LC, Drabo EF, Fabius CD. Patterns and Predictors of Transitions Across Residential Care Settings and Nursing Homes Among Community-Dwelling Older Adults in the United States. *Gerontologist*. 2020 Nov 23;60(8):1495-1503.

Dalpoas SE, Socal MP, Proctor C, Shermock KM. Barriers to biosimilar utilization in the United States. *Am J Health Syst Pharm*. 2020 Oct 22; zxaa297.

Dai T, Bai G, Anderson GF. PPE Supply Chain Needs Data Transparency and Stress Testing. *J Gen Intern Med*. 2020 Sep;35(9):2748-2749.

Drabo EF, Eckel G, Ross SL, Brozic M, Carlton CG, Warren TY, Kleb G, Laird A, Pollack Porter KM, Pollack CE. A Social-Return-On-Investment Analysis Of Bon Secours Hospital's 'Housing For Health' Affordable Housing Program. *Health Aff (Millwood)*. 2021 Mar;40(3):513-520.

Drake C, Yu J, Lurie N, Kraemer K, Polsky D, Chaiyachati K. Policies to Improve Substance Use Disorder Treatment with Telehealth During the COVID-19 Pandemic and Beyond. *Journal of Addiction Medicine*, 14(5):e139-e141, September 2020.

DuGoff EH, Boyd C, Anderson G. Complex Patients and Quality of Care in Medicare Advantage. *J Am Geriatr Soc*. 2020 Feb;68(2):395-402.

Dy SM, Acton RM, Yuan CT, Hsu YJ, Lai AY, Marsteller J, Ye FC, McGee N, Kharrazi H, Mahabare D, Kim J, Gurses AP, Bittle M, Scholle SH. Association of Implementation and Social Network Factors With Patient Safety Culture in Medical Homes: A Coincidence Analysis. *J Patient Saf*. 2020 Jul 29;10.

Fabius CD, Wolff JL, Kasper JD. 2020. Race Differences in Characteristics and Experiences of Black and White Caregivers of Older Americans. *Gerontologist*. Sep 15;60(7):1244-1253.

Fabius CD, Cornell PY, Zhang W, Thomas KS. State Medicaid Financing and Access to Large Assisted Living Settings for Medicare-Medicaid Dual-Eligibles. *Med Care Res Rev*. 2021 Jan 19;1077558720987666.

Fabius C, Shugrue N, Robison JT. Outcomes Associated with Home and Community-based Service Use Among Older Adults following a Nursing Home Transition. *J Gerontol Soc Work*. 2020 Nov-Dec;63(8):807-821.

Feliciano JL, Waldfogel JM, Sharma R, Zhang A, Gupta A, Sedhom R, Day J, Bass EB, Dy SM. Pharmacologic Interventions for Breathlessness in Patients With Advanced Cancer: A Systematic Review and Meta-analysis. *JAMA Netw Open*. 2021 Feb 1;4(2):e2037632.

Fraker JH, Social MP. Manufacturer-Sponsored Cost-Sharing Programs for Insulin: Are Patients Getting the Help They Need? *J Gen Intern Med*. 2021 May 23.

Frick KD, Kacker S, Ballreich J. Consider expenditure controls' impacts on equity. *EClinicalMedicine*. 2021 May 29;36:100913.

Ge ML, Carlson MC, Bandeen-Roche K, Chu NM, Tian J, Kasper JD, Xue QL. U.S. National Profile of Older Adults with Cognitive Impairment Alone, Physical Frailty Alone, and Both. *J Am Geriatr Soc*. 2020 Dec;68(12):2822-2830.

Ge ML, Simonsick EM, Dong BR, Kasper JD, Xue QL. Frailty, with or without Cognitive Impairment, is a Strong Predictor of Recurrent Falls in a US Population-Representative Sample of Older Adults. *J Gerontol A Biol Sci Med Sci*. 2021 Mar 15;glab083.

George T, Ballreich J, Trujillo A, Anderson G. The Association Between Drug Approvals and Burden of Disease From 1990 to 2017. *J Gen Intern Med*. 2021 Feb 2.

Gitajn IL, Reider L, Scharfstein DO, O'Toole RV, Bosse MJ, Castillo RC, Jevsevar DS, Pollak AN; METRC. Variability in Discharge Disposition Across US Trauma Centers After Treatment for High-Energy Lower Extremity Injuries. *J Orthop Trauma*. 2020 Mar;34(3):e78-e85. doi: 10.1097/BOT.0000000000001657. PMID: 31868766.

Graves J, Nshuti L, Everson J, Richards M, Buntin M, Nikpay S, Zhou Z, Polsky, D. Breadth and Exclusivity of Hospital and Physician Networks in US Insurance Markets. *JAMA Network Open*, 3(12): e2029419, December 2020.

Green AR, Boyd CM, Gleason KS, Wright L, Kraus CR, Bedoy R, Sanchez B, Norton J, Sheehan OC, Wolff JL, Reeve E, Maciejewski M, Weffald LA, Bayliss EA. Perspectives on Deprescribing Communication in Primary Care. *Journal of General Internal Medicine*; 2021: 36(4): 1122.

Gupta A, Sedhom R, Sharma R, Zhang A, Waldfogel JM, Feliciano JL, Day J, Gersten RA, Davidson PM, Bass EB, Dy SM. Nonpharmacological Interventions for Managing Breathlessness in Patients With Advanced Cancer: A Systematic Review. *JAMA Oncol*. 2021 Feb 1;7(2):290-298.

Humbyrd, CJ, Wu, SS, Trujillo, A, Socal, M, & Anderson, G. Patient Selection After Mandatory Bundled Payments for Hip and Knee Replacement: Limited Evidence of Lemon-Dropping or Cherry-Picking. *Journal of Bone and Joint Surgery American*, 102(4):325-331; 2020.

Ippolito, B, Levy JL, & Anderson, G. Abandoning List Prices in Medicaid Drug Reimbursement Did Not Impact Spending. *Health Affairs*. 2020.

Jambley, B, Anderson, K, Shanbhag, Sen, A, & Anderson, G. Payment Incentives and the Use of Higher-Cost Drugs: A Retrospective Cohort Analysis of Intravenous Iron in the Medicare Population. *American Journal of Managed Care*. 2020.

Janssen E, Dy SM, Bridges J. Analysis of patient preferences in lung cancer - estimating acceptable tradeoffs between treatment benefit and side effects. Epub, *Patient preference and adherence*, 2020 Jun 3;14:927-937.

*Kabani A, Dy SM, Gupta A. The Key Role of Nonpharmacological Management of Anorexia/ Cachexia in Persons with Advanced Illness: A Teachable Moment. Epub, *JAMA Intern Med*.

*Kang SY, Bai G, DiStefano MJ, Socal MP, Yehia F, Anderson GF. Comparative Approaches to Drug Pricing. *Annu Rev Public Health*. 2020 Apr 2;41:499-512.

*Kang SY, Socal MP, Bai G, Anderson GF. Off-Label Coverage of High-Cost Drugs by Independent Charity Patient Assistance Programs. *J Gen Intern Med*. 2021 Feb;36(2):555-556.

Keller S, Dy S, Wilson R, Dukhanin V, Snyder C, Wu A. Selecting Patient-Reported Outcome Measures to Contribute to Primary Care Performance Measurement: a Mixed Methods Approach. *J Gen Intern Med*. 2020 Sep;35(9):2687-2697.

Kuchinad K, Sharma R, Isenberg SR, Hamayel NAA, Weaver SJ, Zhu J, Hannum SM, Kamal AH, Walling AM, Lorenz KA, Ailon J, Dy SM. Perceptions of Facilitators and Barriers to Measuring and Improving Quality in Palliative Care Programs. *Am J Hosp Palliat Care*. 2020 Dec;37(12):1022-1028.

Lai AY, Yuan CT, Marsteller JA, Hannum SM, Lasser EC, Heughan JA, Oberlander T, Berger ZD, Gurses AP, Kharrazi H, Pitts SI, Scholle SH, Dy SM. Patient Safety in Primary Care: Conceptual Meanings to the Health Care Team and Patients. *J Am Board Fam Med*. 2020 Sep-Oct;33(5):754-764.

Leeds IL, Drabo EF, Lehmann LS, Safar B, Johnston FM. On All Accounts: Cost-Effectiveness Analysis of Limited Preoperative Optimization Efforts Before Colon Cancer Surgery. *Dis Colon Rectum*. 2021 Jun 1.

Levy J, Chowdhury ZM, Socal MP, Trujillo AJ. Changes Associated With the Entry of a Biosimilar in the Insulin Glargine Market. *JAMA Intern Med*. 2021 Jun 28.

Liu C, Fabius CD, Howard VJ, Haley WE, Roth DL. Change in Social Engagement among Incident Caregivers and Controls: Findings from the Caregiving Transitions Study. *J Aging Health*. 2021 Jan;33(1-2):114-124.

Liu M, Xue QL, Gitlin LN, Wolff JL, Guralnik J, Leff B, Szanton SL. Disability Prevention Program Improves Life-space and Falls Efficacy: A Randomized Controlled Trial. *Journal of the American Geriatrics Society*; 2021 69(1): 85-90.

Lord SE, Campbell ANC, Brunette MF, Cubillos L, Bartels SM, Torrey WC, Olson AL, Chapman SH, Batsis JA, Polsky D, Nunes EV, Seavey KM, Marsch LA. Workshop on Implementation Science and Digital Therapeutics for Behavioral Health. *JMIR Mental Health*, 8(1):e17662, January 2021.

Lorenz KA, Mickelsen J, Vallath N, Bhatnagar S, Spruyt O, Rabow M, Dy SM, et al. The Palliative Care - Promoting Assessment and Improvement of the Cancer Experience (PC-PAICE) Project: A Multi-Site International Quality Improvement Collaborative. *J Pain Symptom Manage*, 2021 Jan;61(1):190-197.170.

Mattingly TJ, Wolff JL. Caregiver Economics: A Framework for Estimating the Value of the American Jobs Plan. *Journal of the American Geriatrics Society*; in press.

McLaughlin KH, Reider L, Castillo RC, Ficke JR, Levy JF (2021) Outpatient Physical Therapy Utilization Following Tibia Fractures: A Retrospective Commercial Claims Analysis. *Physical Therapy & Rehabilitation Journal*. 4 (101):5 pzab034.

METRC (writing group: Bosse MJ, Carroll EA, Firoozabadi R, Gary JL, Gordon WT, Jones CB, Morshed S, Teague D, Scharfstein DO, Luly J, MacKenzie EJ, Reider L) (2021). Outcomes Following Severe Distal Tibia, Ankle, and/or Mid/Hind Foot Trauma: Comparison of Limb Salvage and Transtibial Amputation (OUTLET). *J Bone Joint Surg Am*. E pub May 12.

Moore TJ, Heyward J, Anderson G, Alexander GC. Variation in the estimated costs of pivotal clinical benefit trials supporting the US approval of new therapeutic agents, 2015-2017: a cross-sectional study. *BMJ Open*. 2020 Jun 11;10(6):e038863.

Navathe A, Lei V, Fleisher L, Luong TB, Chen X, Kennedy E, Volpp K, Polsky D, Groeneveld P, Weiner M, Holmes JH, Neuman MD. Improving Identification of Patients of Low Risk for Major Cardiac Events After Noncardiac Surgery Using Intraoperative Data. *Journal of Hospital Medicine*, 15(10):581-587, September 2020.

Nothelle S, Wolff J, Nkodo A, Litman J, Dunbar L, Boyd C. "It's Tricky": Care Managers' Perspectives on Interacting with Primary Care Clinicians. *Popul Health Manag*. 2021 Jun;24(3):338-344.

O'Hanlon C, Lindvall C, Lorenz KA, Giannitrapani K, Garrido MM, Asch SM, Wenger NS, Malin JL, Dy SM. Measure Scan and Synthesis of Palliative and End-of-Life Process Quality Measures for Advanced Cancer. *J Onc Pract*, 2021 Feb;17(2):e140-e148.

Oberlander T, Scholle SH, Marsteller J, Barr MS, Dy SM. Implementation of Patient Safety Structures and Processes in the Patient-Centered Medical Home. *J Healthc Qual*. 2021 Jun 9.

O'Hanlon CE, Lindvall C, Giannitrapani KF, Garrido M, Ritchie C, Asch S, Gamboa RC, Canning M, Lorenz KA, Walling AM; ImPACS Expert Panel. Expert Stakeholder Prioritization of Process Quality Measures to Achieve Patient- and Family-Centered Palliative and End-of-Life Cancer Care. *J Palliat Med*. 2021 Feb 19.

*Okoye SM, Samuel LJ, Fabius C, Mulcahy J, Reider LM, Szanton SL, Wolff JL. Home and Neighborhood Context of Falls Among Black and White Older Americans. *J Aging Health*. 2021 Apr 20;8982643211009436.

*Okoye SM, Mulcahy JF, Fabius CD, Burgdorf JG, Wolff JL. Neighborhood Broadband and Use of Telehealth Among Older Adults: Cross-sectional Study of National Survey Data Linked With Census Data. *J Med Internet Res*. 2021 Jun 14;23(6):e26242.

Ornstein KA, Roth DL, Huang J, Levitan EB, Rhodes JD, Fabius CD, Safford MM, Sheehan OC. Evaluation of Racial Disparities in Hospice Use and End-of-Life Treatment Intensity in the REGARDS Cohort. *JAMA Netw Open*. 2020 Aug 3;3(8):e2014639.

Padula WV, Parasrampur S, Socal MP, Conti RM, Anderson GF. Market Exclusivity for Drugs with Multiple Orphan Approvals (1983-2017) and Associated Budget Impact in the US. *Pharmacoeconomics*. 2020 Oct; 38(10):1115-1121.

Padula WV, Parasrampur S, Socal MP, Conti RM, Anderson GF. Reply to Comment on "Market Exclusivity for Drugs with Multiple Orphan Approvals (1983-2017) and Associated Budget Impact in the US". *Pharmacoeconomics*. 2020 Dec;38(12):1375-1376.

Parker LJ, Fabius C, Rivers E, Taylor JL. Is Dementia-Specific Caregiving Compared With Non-Dementia Caregiving Associated With Physical Difficulty Among Caregivers for Community-Dwelling Adults? *J Appl Gerontol*. 2021 May 27;7334648211014352.

Parker LJ, Fabius CD. Racial Differences in Respite Use among Black and White Caregivers for People Living with Dementia. *J Aging Health*. 2020 Dec;32(10):1667-1675.

Polsky D, Sen A, Arsenault S. Innovative Payment to Scale up Access to Medications for Opioid Use Disorder. *American Journal of Managed Care*, 26(7):286-287, July 2020.

Polsky D, Bingxiao W. Provider Networks and Health Plan Premium Variation. *Health Services Research*, 56(1): 16-24, February 2021.

Premnath N, Sumarsono A, Sedhom R, Johnson DH, Subbiah IM, Dy SM, Gupta A. Use of Peripheral μ -Opioid Receptor Antagonists for Treating Opioid-Induced Constipation among US Medicare Beneficiaries from 2014 to 2018. *J Palliat Med*. 2021 Aug;24(8):1236-1239.

Russell D, Burgdorf JG, Kramer C, Chase JD. Family Caregivers' Conceptions of Trust in Home Health Care Providers. *Res Gerontol Nurs*. 2021 Jul-Aug;14(4):200-210.

Reider L, Pollak A, Wolff JL, Magaziner J, Levy JF. National trends in extremity fracture hospitalizations among older adults between 2003 and 2017. *J Am Geriatr Soc*. 2021 Jun 1.

Reider L, Bai J, Scharfstein DO, Zipunnikov V; for METRC OUTLET Study Investigators. Methods for Step Count Data: Determining "Valid" Days and Quantifying Fragmentation of Walking Bouts. *Gait Posture*. 2020 Sep;81:205-212.

Reuben DB, Wolff JL. The Future of Dementia Care, Caregiving, and Services Research. *Journal of the American Geriatrics Society*; 2021, 69(7): 1752-1754.

Reuben DB, Wolff JL. The Future of Dementia Care, Caregiving, and Services Research. *Journal of the American Medical Directors Association*; 2021, 22(7): 1361-1362.

Riffin C, Wolff JL, Butterworth J., Adelman RD, & Pillemer KA. Challenges and approaches to involving family caregivers in primary care. *Patient Education & Counseling*; 2020 28(S0738-3991).

Riffin C, Wolff JL, Pillemer KA. Assessing and Addressing Family Caregivers' Needs and Risks in Primary Care. *Journal of the American Geriatrics Society*; 2021 69(2): 432-440.

Rivera-Hernandez M, Fabius CD, Fashaw S, Downer B, Kumar A, Panagiotou OA, Epstein-Lubow G. Quality of Post-Acute Care in Skilled Nursing Facilities That Disproportionately Serve Hispanics With Dementia. *J Am Med Dir Assoc*. 2020 Nov;21(11):1705-1711.e3.

Roberts B, Wright SM, Dy SM, Wu DS. Narrative Approach to Goals of Care Discussions: Assessing the Use of the 3-Act Model in the Clinical Setting. *J Pain Symptom Manage*. 2020 Oct;60(4):874-878.

Roberts B, Mehta AK, McWhirter M, Dy SM, Wright SM, Wu DS. Narrative Approach to Goals of Care Discussions: Adapting the 3-Act Model Training to an Online Format. *J Pain Symptom Manage* 2021 epub.
Robison JT, Shugrue NA, Fortinsky RH, Fabius CD, Baker K, Porter M, Grady JJ. A New Stage of the Caregiving Career: Informal Caregiving After Long-Term Institutionalization. *Gerontologist*. 2020 Nov 10:gnaa185.

Samuel LJ, Szanton SL, Wolff JL, Ornstein KA, Parker LJ, Gitlin LN. Socioeconomic disparities in six-year incident dementia in a nationally representative cohort of U.S. older adults: An examination of financial resources. *BMC Geriatrics*; 2020 20(1).

Samuel L, Szanton SL, Wolff JL, Gaskin DJ. Supplemental Nutrition Assistance Program 2009 Expansion and Cardiometabolic Markers Among Low-Income Adults; *Preventive Medicine*; in press.

*Sherry MK, Bishai DM, Padula WV, Weiner JP, Szanton SL, Wolff JL. Impact of Neighborhood Social and Environmental Resources on Medicaid Spending. *American Journal of Preventive Medicine*; 2021.

Sloan DH, Hannum SM, DeGroot L, Dy SM, Waldfogel J, Chyr LC, Heughan JA, Zhang A, Wilson RF, Yuan CT, Wu DS, Robinson KA, Cotter VT. Advance Care Planning Shared Decision-Making Tools for Non-Cancer Chronic Serious Illness: A Mixed Method Systematic Review. *Am J Hosp Palliat Care*. 2021 Feb 15.

Socal MP. Patient Narratives: a Tool for People-Centered Health Systems Education. *Med Sci Educ*. 2020 Jul 28;30(4):1437-1443.

Socal MP, Anderson GF. The Role of Advance Purchasing Commitments in Government Drug Price Negotiations: Lessons From the COVID-19 Response. *Am J Public Health*. 2021 Apr;111(4):652-657.
Socal MP, Ezebilo I, Bai G, Anderson GF. Biosimilar formulary placement in Medicare Part D prescription drug plans: A case study of infliximab. *Am J Health Syst Pharm*. 2020 Dec 8:zxaa376.

Socal MP, Garrett JB, Tayler WB, Bai G, Anderson GF. Naming Convention, Interchangeability, and Patient Interest in Biosimilars. *Diabetes Spectr*. 2020 Aug;33(3):273-279.

Socal MP, Parasrampur S, Anderson GF. Modifying the Criteria for Granting Orphan Drug Market Exclusivity. *Value In Health*. September 28, 2020.

Socal MP, Bai G, Anderson GF. Factors Associated With Prescriptions for Branded Medications in the Medicare Part D Program. *JAMA Netw Open*. 2021;4(3):e210483.

Socal MP, Sharfstein J, Greene JA. Critical Drugs for Critical Care: Protecting the US Pharmaceutical Supply in a Time of Crisis. *American Journal of Public Health*. 2020 Sept; 110(9): 1346-1347.

Socal MP, Sharfstein JM, Greene JA. The Pandemic and the Supply Chain: Gaps in Pharmaceutical Production and Distribution. *Am J Public Health*. 2021 Apr;111(4):635-639.

Socal MP, Anderson GF. Older Americans' Preferences Between Lower Drug Prices and Prescription Drug Plan Choice, 2019. *Am J Public Health*. 2020 Mar;110(3):354-356.

Socal MP, Anderson KE, Sen A, Bai G, Anderson GF. Biosimilar Uptake in Medicare Part B Varied Across Hospital Outpatient Departments and Physician Practices: The Case of Filgrastim. *Value Health*. 2020 Apr;23(4):481-486.

Spillman BC, Freedman VA, Kasper JD, Wolff JL. Change Over Time in Caregiving Networks for Older Adults With and Without Dementia. *J Gerontol B Psychol Sci Soc Sci*. 2020 Aug 13;75(7):1563-1572.

Trujillo, AJ, Garcia-Morales, EE, Kabarriti, G, Anderson, G. Do mergers and acquisitions improve firms' financial performance? The case of the US generic drug industry. *Managerial and Decision Economics*. 2020.

Trujillo, A, Karmarkar, T, Alexander, C, Padula, W, Greene, J, Anderson, G. Fairness in Drug Prices: Do Economists Think Differently from the Public? *Health Economics, Policy and Law*, January 2020.

Tzuang M, Owusu JT, Huang J, Sheehan OC, Rebok GW, Paudel ML, Wickwire EM, Kasper JD, Spira AP. 2020. Associations of Insomnia Symptoms with Subsequent Health Services Use among Community-Dwelling U.S. Older Adults. *Sleep*. 2020 Nov 24: 251.

Usher T, Buta B, Thorpe RJ, Huang J, Samuel LJ, Kasper JD, Bandeen-Roche K. Dissecting the Racial/Ethnic Disparity in Frailty in a Nationally Representative Cohort Study with Respect to Health, Income, and Measurement. *J Gerontol A Biol Sci Med Sci*. 2021 Jan 1;76(1):69-76.

Varadaraj V, Swiatek KS, Chung SE, Ehrlich JR, Assi L, Wolff JL, Swenor BK. Caring for Older Adults with Self-Reported Vision Impairment: Findings from the National Study of Caregiving. *American Journal of Ophthalmology*; 2021: 211-221.

*Vick JB and Wolff JL. A Scoping Review of Person and Family Engagement in the context of Multiple Chronic Conditions; *Health Services Research*; in press.

Wagner-Johnston N, Hannum SM, Heughan JA, Abshire M, Wolff JL, Arrington L, Symons H, Jones R, Dy SM. Assessing Early Supportive Care Needs Among Son or Daughter Haploidentical Transplantation Donors Biology of Blood and Marrow Transplantation. *Biol Blood Marrow Transplant*, 2020 Nov;26(11):2121-2126 165.

Wolff JL, Bengtson JF, Cassel CK, Monin JK, Reuben DB. Emerging Topics in Dementia Care and Services. *Journal of the American Geriatrics Society*; 2021, 69(7): 1763-1773.

Wolff JL, Auful J, Echavarría D, Blackford AL, Connolly RM, Fetting JH, Jelovac D, Papathakis K, Riley C, Stearns V, Zafman N, Thorner E, Levy HP, Guo A, Dy SM, Wolff AC. A randomized intervention involving family to improve communication in breast cancer care. *NPJ Breast Cancer*. 2021 Feb 12;7(1):14.

Wolff JL, Aufill J, Echavarria D, Blackford AL, Connolly RM, Fetting JH, Jelovac D, Papathakis K, Riley C, Stearns V, Zafman N, Thorner E, Levy HP, Guo A, Dy SM, Wolff AC. Sharing in Care: A Randomized Trial on the Effects of a Communication Intervention to Engage Care Partners in Breast Cancer Care. *NPJ Breast Cancer*; 2021 7(1).

Wolff JL, Scerpella D, Cockey K, Hussain N, Funkhouser T, Echavarria D, Aufill J, Guo A, Sloan DH, Dy SM, Smith KM. SHARING Choices: A Pilot Study to Engage Family in Advance Care Planning of Older Adults with and without Cognitive Impairment in the Primary Care Context. Epub, *Am J Hosp Pall Care*, 2021.

Wormser B, Socal MP, Anderson G. Variability of COPD inhaler coverage in Medicare Part D. *Am J Manag Care*. 2021 May;27(5):187-193.

Xue QL, Bandeen-Roche K, Tian J, Kasper JD, Fried LP. 2021. Progression of Physical Frailty and the Risk of All-Cause Mortality: Is there a Point of No Return? 2021. *J Am Geriatr Soc*. Apr; 69(4):908-015.

Yen CL, Wu CY, See LC, Li YJ, Tseng MH, Peng WS, Liu JR, Chen YC, Yen TH, Tian YC, Yang CW, Anderson GF, Yang HY. Pioglitazone Reduces Mortality and Adverse Events in Patients With Type 2 Diabetes and With Advanced Chronic Kidney Disease: National Cohort Study. *Diabetes Care*. 2020 Oct;43(10):e152-e153.

Yuan CT, Lai AY, Benishek LE, Marsteller JA, Mahabare D, Kharrazi H, Dy SM. A double-edged sword: The effects of social network ties on job satisfaction in primary care organizations. *Health Care Manage Rev*. 2021 May 7.

Zawadzki RS, Gong CL, Cho SK, Schnitzer JE, Zawadzki NK, Hay JW, Drabo EF. Where Do We Go From Here? A Framework for Using Susceptible-Infectious-Recovered Models for Policy Making in Emerging Infectious Diseases. *Value Health*. 2021 Jul;24(7):917-924.

Zhu JM, Polsky D. Private Equity and Physician Medical Practices – Navigating a Changing Ecosystem. *New England Journal of Medicine*, 384(11): 981-983, March 2021.



EDUCATIONAL ACTIVITIES

The Center is committed to educating and supporting the next generation of leaders. Center faculty lead the Johns Hopkins University Certificate in Gerontology (Wolff), direct doctoral programs in Health Economics (Nicholas) and Health Services Research and Policy (Anderson) and the MHS in Health Economic (Ballreich), teach Economic Evaluation (Ballreich; Drabo), Economics (Nicholas, Sen), about the U.S. Healthcare system (Polsky, Socal) and pharmaceutical policy (Socal), and support core MPH courses (Anderson) and doctoral curriculum (Kasper, Reider). Additionally, faculty are engaged in mentoring a wide range of trainees, including masters and doctoral students, post-doctoral fellows, and junior faculty who are supported on federally-funded career development awards. Center faculty direct two T32 training programs. Sydney Dy leads a T32 training program funded by the Agency for Health Care Research and Quality that provides support to early-stage pre-doctoral students enrolled in doctoral programs in the Department of Health Policy and Management. Center Director, Jennifer Wolff and Cynthia Boyd, Division Director of Geriatric Medicine and Gerontology in the University's School of Medicine lead a new Cross-School T32 training program funded by the National Institute on Aging that seeks to produce the next generation of scientists with rigorous training in person and family-centered health services and outcomes research with a focus on older adults.

Courses Taught by Center Faculty in the Department of Health Policy and Management at the Johns Hopkins Bloomberg School of Public Health Include:

Term 1: August 2020

300.600.81 Introduction to Health Policy (4 credits)
– Gerard Anderson

300.741.01 PhD Seminar in Health Policy: Using
Secondary Data to Conduct Health Policy Research
(1 credit) – Lauren Nicholas

311.615.81 Quality of Medical Care (3 credits) -
Sydney M. Dy (also taught during Winter Institute)

300.741.01 PhD Seminar in Health Policy: Using
Secondary Data to Conduct Health Policy Research
(1 credit) - Lauren H. Nicholas

300.651.01 Introduction to the U.S. Healthcare
System (4 credits) – Dan Polsky and Mariana Socal

309.861.01 Graduate Seminar in Health Services
Research and Policy (1 credit) – Jennifer Wolff

Term 2: October 2020

603.701.86 Introduction to Quality of Care for
Practitioners (4 credits) - Sydney M. Dy

300.870.01 The Research and Proposal Writing
Process I (2 credits) - Judith Kasper and Lisa Reider

313.643.81 Health Economics (3 credits) – Aditi Sen

309.605.01 Health Issues for Aging Populations (3
credits)– Chanee Fabius

313.601.81 Economic Evaluation I (3 credits) –
Jeromie Ballreich

309.861.01 Graduate Seminar in Health Services
Research and Policy (1 credit) – Jennifer Wolff

Term 3: January 2021

313.861.01 Public Health Economics Seminar (1 credit) - Jeromie Ballreich

309.861.01 Graduate Seminar in Health Services Research and Policy (1 credit) – Jennifer Wolff

Term 4: March 2021

313.790.81 Introduction to Economic Evaluation (3 credits) - Jeromie Ballreich

313.861.01 Public Health Economics Seminar (1 credit) - Jeromie Ballreich

313.865.01 MHS Capstone in Health Economics (2 credits) - Jeromie Ballreich

300.871.01 The Research and Proposal Writing Process II (2 credits)- Judith Kasper and Lisa Reider

308.630.01 U.S. Pharmaceutical Policy (3 credits) – Mariana Socal

313.603.81 Economic Evaluation III (3 credits) – Emmanuel Drabo

309.861.01 Graduate Seminar in Health Services Research and Policy (1 credit) – Jennifer Wolff

T32 TRAINING PROGRAM IN HEALTH SERVICE AND OUTCOMES RESEARCH FOR AGING POPULATIONS

The Health Services and Outcomes Research for Aging Populations T32 Training Program at Johns Hopkins University seeks to produce the next generation of scientists with rigorous training in person and family-centered health services and outcomes research with a focus on older adults and is led by co-directors Cynthia Boyd, MD, MPH and Jennifer Wolff, PhD, in close partnership with Sarah Szanton, RN, PhD. This Cross-School program draws on the rich resources for research in health services, health economics, gerontology, nursing, health informatics, and geriatrics across the Johns Hopkins University, including its Bloomberg School of Public Health (JHSPH), School of Medicine (SOM), and School of Nursing (SON). The training program is housed in the Roger C. Lipitz Center for Integrated Health Care in the JHSPH Department of Health Policy and Management and run jointly with the JHSOM Division of Geriatric Medicine and Gerontology, with strong ties to the Johns Hopkins School of Nursing. Trainees obtain the knowledge, skill, and experience to lead multi-disciplinary, collaborative research teams. The overarching aim of the program is to identify and train pre- and post-doctoral scholars who will become leaders in person and family-oriented research relating to aging populations.

The training program encompasses a range of didactic and applied learning activities, including: 1) a biweekly seminar series, 2) a year-long practicum providing exposure to a range of real-world applications in clinical service delivery, financing and organization, and program and policy implementation in health and social service settings, 3) coursework in the JHSPH to expose trainees to seminal theory, conceptual frameworks, perspectives, skills, and content knowledge that is necessary to leading research studies in gerontologic services research. These components provide trainees with a solid foundation in health services and outcomes research while providing the opportunity to pursue specialized training in focal areas of interest.

The program includes tuition support, health insurance, and a NIH-level stipend to 8 trainees: 4 pre-doctoral students and 4 post-doctoral fellows each year. These trainees are supported by an experienced group of approximately 20 core faculty and 20 affiliate faculty members with expertise in one or more fields related to aging research.

Pre- and post-doctoral trainees appointed to the program in the 2020 - 2021 academic year were:

Post-Doctoral Fellow

Julia Burgdorf, PhD

Pre-Doctoral Fellows

Jenni Reiff

Lyndsay DeGroot

Mani Berete Keita Fakeye, PhD



jhsph.edu/lipitzcenter | [@lipitzcenter](https://twitter.com/lipitzcenter) | [Lipitz Quarterly](#)



JOHNS HOPKINS
BLOOMBERG SCHOOL
of PUBLIC HEALTH